

# Village & Valley

**SPRING 2019**

The magazine of the  
Rowlands Castle Association






**Richard C Arnold**

Optometrists & Contact Lens Practitioners

EST 1890

**Petersfield**

**ARNOLD & SON**   
EST 1890

[www.rcarnold.co.uk](http://www.rcarnold.co.uk)  
3-4 Exchange Bldgs, High St,  
GU32 3JU

Tel: 01730 263302

**Midhurst**

**arnolds opticians limited**  
[www.arnoldsopticians.co.uk](http://www.arnoldsopticians.co.uk)  
Ewen House, Red Lion St,  
GU29 9PB

Tel: 01730 814035

**Cowplain**

**arnolds opticians limited**  
[www.arnoldsopticians.co.uk](http://www.arnoldsopticians.co.uk)  
69 London Road,  
PO8 8UJ

Tel: 02392 250641

**Always the choice for quality sympathetic  
eye care from our team of  
qualified Optometrists & Dispensing Opticians.  
You can relax knowing your eyes are in good hands!**



**SPRING 2019**

## CONTENTS

# Village & Valley

The magazine of the  
Rowlands Castle Association

5	Message from Chair
6	Parish Council News
9	East Hants District Council
10	Hampshire County Council
11	Neighbourhood Plan
12	Village Matters
14	Community and RCA events
16	The RCA online
17	Letters to the editor
18	RC Heritage Centre
21	D-Day memories
24	Emsworth arts trail
26	Cakes 4 cancer
27	Painting society
29	Gardening Club
30	Local arts and crafts
34	St Huberts
35	St John's
36	Parish Hall
37	Volunteering at Staunton Park
38	The centre spread
42	Vintage Village
43	Womains Institute
44	The village in pictures
45	National Tea Day
46	St John's Primary
47	Good Neighbours
50	NSPCC
52	Smart energy
52	Litter picking
53	Village fair
54	Health and wellness
57	St John's PTA
58	Science thoughts
60	Church on the green
61	Golf club news
62	Further afield
66	Community Rail
67	Reporting issues
72	Numbers to know

The Village magazine is published three times a year by the RCA. The aim of the Association is to conserve the character of Rowlands Castle, to provide a channel of communication on matters of local interest and to enhance the life of the village.



## / CONTRIBUTION GUIDELINES

The village magazine depends upon your contributions. If you wish to submit material for a future issue please follow the guidelines as set out below:

- Contributions should be between 200-300 words and you should provide at least one image (max 10MB) to accompany your article.
- Please provide the image(s) as a separate email attachment, not as part of a Word doc.
- Please send your copy/text as a 'Word' file or by email.
- Please DO NOT paste photos into a Word doc.
- Please do not 'design' your contribution in Word or any other software.

**PLEASE NOTE** the deadlines below:

**SPRING issue:** 18th March  
**SUMMER issue:** 18th June  
**AUTUMN issue:** 18th October

**PLEASE BE AWARE:**

*Due to print deadlines late submissions might not be considered for publication.*

## / ADVERTISE IN THIS MAGAZINE

The village magazine is funded entirely by advertising. If you would like to promote your business or services and advertise on these pages please contact Prue Amner on the address below:  
[ads@rowlandscastle.com](mailto:ads@rowlandscastle.com)

## / THE GRAPEVINE

Grapevine is the village messaging service that sends out emails to those that have signed up about events and important information connected to the village.

To sign up, send a blank email to:  
[grapevine@rowlandscastle.com](mailto:grapevine@rowlandscastle.com)

To post a message to the Grapevine send your email to [info@rowlandscastle.com](mailto:info@rowlandscastle.com)

## / COVER PICTURE

Deanlane End from Forestside road

## / YOUR RCA COMMITTEE 2018/19

Helen Penfold (Chair)  
[chair@rowlandscastle.com](mailto:chair@rowlandscastle.com)  
02392 413233  
07557 276242

Martha Dombey (Treasurer)  
[treasurer@rowlandscastle.com](mailto:treasurer@rowlandscastle.com)  
9241 0030

Sue Leonard (Secretary)  
[secretary@rowlandscastle.com](mailto:secretary@rowlandscastle.com)  
9241 2108

Gordon Charlesworth  
9241 3865

Sue Morrison  
07795 566090

Joyce Jacobs  
9241 3738

Rodney Duggua  
075050 42723

Ben Brittain  
9241 3043

June Halford  
9241 2674

Mark Dombey (Webmaster)  
[webmaster@rowlandscastle.com](mailto:webmaster@rowlandscastle.com)  
92410030

Kelvin Schäfli (Magazine editor)  
[editor@rowlandscastle.com](mailto:editor@rowlandscastle.com)

## RCA ONLINE

[www.rowlandscastle.com](http://www.rowlandscastle.com)

[www.facebook.com/rowlandscastleassociation/](http://www.facebook.com/rowlandscastleassociation/)

ksphoto.co.uk

## / RCA CHAIR REPORT

### MESSAGE FROM THE CHAIR

*Helen Penfold*

Thank you to everyone who attended our recent AGM, and for all the positive and helpful comments which were made about how we can stay true to the aims of the RCA and to welcome new residents to our lovely village.

'Aren't we lucky to be part of this wonderful village?' These are not my words, but I very much agree with them. They are the words of Eugene Billam, who started the RCA. In 1972. Eugene was part of a group of local residents who successfully opposed the plans for a large housing development at the end of Wellsworth Lane. They then decided that Rowlands Castle needed a permanent organisation to protect its interests and the Rowlands Castle Association was born. Eugene edited the magazine and he and Frank Philpot started the annual fireworks display - with just a few fireworks they set off themselves. He also started the village fair. We have a lot to thank him for.

Our annual events now include the;

- The May Day Picnic • The Children's Christmas Party • The RCA quiz • Litter picking

Our annual litter pick takes place on the last weekend in March and we now organise a monthly litter pick on the last weekend of every month. More details further on in this magazine.

The annual fireworks display

The RCA has been putting on the firework display for 40 years and I believe this is an event which the village can be proud to host. The fireworks have become increasingly popular, even without the bonfire and in 2016 and 2017 we had a record numbers of spectators, between 3000 and 4000, which was great for our funds, giving us a lot more money to give back into village organisations but a few of us in the RCA became concerned as to whether it was wise to have so many people there. We took expert advice from staff at East Hants District Council (EHDC) and we talked to the parish council (RCPC), who are stewards for the recreation ground. We agreed guidelines, as to how we could run a safer event in November 2018 and in the end, after many hours of planning, the Firework display did go ahead. We had 2000 people enjoying a wonderful display on a fine evening! Thank you to all our volunteer stewards and other helpers, without whom we could not have run the display. A real community event!

There is now a question about the future of the fireworks. A working party, with members from the RCA, RCPC and the Recreation Management Committee, has been set up to look at the Health and Safety issues relating to the fireworks display. There is a statement from the working party, further on in the magazine and information on the consultation process about the proposals. The RCA is in favour of a second pedestrian exit from the recreation ground because we want the fireworks to continue in the safest way possible but there are still issues to resolve. It is RCPC who will, in due course, make the final decision regarding a possible second exit

Please give us your thoughts about the fireworks, when you have read the statement from the working party, further on in the magazine.

Best Wishes,

Helen Penfold  
[chairman@rowlandscastle.com](mailto:chairman@rowlandscastle.com)  
07557276242

## WHAT HAS THE PARISH COUNCIL BEEN DOING?

*Lisa Walker*

*Clerk to Rowlands Castle Parish Council*

### General Council Matters

The RCPC Office has been kept very busy dealing with an increasing amount of residents' comments and enquiries, all of which are reported to the monthly Council Mtgs. Councillors have also attended a variety of meetings over the last 5 months: East Hants Passenger Transport Forum, East Hants Community Rail Partnership, Community Partnership Mtg Butser Sector, East Hants Association of Parish & Town Councils, Montague Green Developer Liaison Mtgs, Havant Thicket Reservoir Stakeholder Group, Land East of Horndean Development Panel Mtgs, SDNPA Parish Workshops and EHDC Local Plan Training Events. Their attendance helps to keep cllrs and staff up-to-date with happenings both near and far and shows their commitment to serving their community. The next Parish Council elections will take place on 2 May 2019.

At the Hampshire Association of Local Councils' AGM, the Clerk was jointly awarded Hampshire Clerk of the Year (with the Clerk to Petersfield Town Council) and the Parish Council was awarded Best Hampshire Local Council Website of the Year.

In December, the Clerk and several councilors were also involved in judging St John's School's Years 5 & 6 Train Station Project. They were impressed with the children's commitment and the high standard of work. RCPC sponsored the prizes for the winners.

### Money, Money, Money

RCPC raised its precept for 2019/20 by a modest 2.5% to £104,175 in line with inflation. New development has meant this sum has been spread over an increased number of households so many have seen a decrease in RCPC's portion of their Council Tax bill. As well as general running costs, some funds have been ear-marked for the refurbishment of the bus shelter, a new Village

Information Board, funds towards future Parish-wide enhancements, the potential 2nd access way at the Rec, and SDNP-themed signage for Finchdean.

### Proposals for a 2nd, Emergency-only Access way from the Recreation Ground

The apparent need for such an access way was raised initially by the Rowlands Castle Association, with particular regard to HSE's guidelines regarding crowd safety at the annual Fireworks Display. Such an access way may also be desirable for other users of the Rec. The Parish Council has appointed a Working Group to consider the feasibility of such an access way and there is a separate article in this Magazine on the Group's findings to date. As sole trustee of the Rec, RCPC is conscious of its need to safeguard users. RCPC knows the Fireworks is a community event to which many residents look forward, whilst acknowledging the effect any proposed access way might have on those living closest to it. No decision on whether to construct such an access way has been made to date.

**The Group's proposals will be the subject of consultation at the Annual Parish Meeting on 15 April 2019 at 7pm in the Parish Hall. If you want to know more, please come along.**

### Developers' Contributions

RCPC assisted in arrangements to ensure all current contributions for community facilities were apportioned to applicants throughout the Parish, namely St John's Church, the Church on the Green, RC Scout Hut and St Hubert's Church, Idsworth. RCPC awaits the Rec Ground Management Committee's recommendations on how to best spend £40K of contributions originally allocated for pitch improvements. It may be RCPC requests a variation to allow expenditure on other Rec-related items.

Recently, RCPCllrs met with County Cllr Harvey and senior HCC officers to lobby over usage of some £500K of transport contributions collected from developments within the Parish. RCPC is pushing for these funds to be spent in as 'joined up' a way as possible to address highways and speeding issues around the Parish. In addition, RCPC is acutely aware that development beyond the Parish ie in north Emsworth and east of Horndean will significantly increase vehicle usage of the roads leading up the mini-roundabout system by the Shell Garage.

Thanks to environmental improvement contributions, all the recommendations in the 2017 Tree Surveys have now been completed, and the planned replanting undertaken on Deerleap Verge, King's Meadow Estate and at the Rec

### Lining and Signing, Boards and Bins

After consultation, EHDC sanctioned new Traffic Regulation Orders for Redhill Road, Links Lane and Uplands. RCPC was disappointed that not all its suggestions were taken on board but understands the majority of the new TROs have had a positive effect now that the appropriate lining has been undertaken.

Last year, RCPC secured a retrospective Wayleave Agreement and payment from BT after its installation of a new inspection pit on Deerleap Verge, which is part of The Green and owned by RCPC. RCPC was then surprised to hear of plans to install Rights of Way and road name signs on the Verge as well. RCPC had yet to be consulted on these matters let alone give its permission. It would seem higher authorities had made some incorrect assumptions about authorisation and ownership. RCPC is requiring its permission be sought and granted before any such installation(s).

The new community board has now been installed near the post box on The Green, with paving slabs in front so readers don't need to get too muddy! One of RCPC's next projects is to design and install a new Village

Information Board. In the meantime, the old one was becoming a bit rickety so has been removed. In conjunction with EHDC, an additional bin has been installed in Nightingale Close to discourage littering, particularly those thoughtless owners who leave their dog's poo bags around for the 'fairies' to collect. The old dog waste bin on the corner of College Close and Redhill Rd has also been replaced by a shiny new black and gold dual-purpose bin.

### New Developments

RCPC staff and councillors continue to attend regular Montague Green Liaison Mtgs which include representatives from Bellway Homes. RCPC has also resolutely pursued the issues around the bellmouth for the access roads to the 2 new developments from Nicholas King Homes and Bargate Homes. RCPC has secured assurances that it will be narrowed to improve visibility and safety for all users, once both developments have been completed. RCPC also believes the Deerleap Verge has been encroached upon during the works and is following this up with higher authorities.

Earlier in the year, Savills gave a presentation on Portsmouth City Council's potential plan to develop 75-100 dwellings on a site south of Little Leigh Farm. Any application was dependent upon the site being allocated in EHDC's revised Local Plan.

Despite an apparent willingness to do so, RCPC understands many roads and drainage systems in new developments remain unadopted by the respective local highways department or water company. There is little incentive for the developers to have them adopted either. Instead, they often become the responsibility of appointed management companies to oversee. RCPC recognised the importance of maintaining such infrastructure, both for the benefit of new properties and so as not to disadvantage adjacent properties.

*Continued overleaf...*



*Continued...*

RCPC has expressed concern to HCC as to what measures were in place to ensure such management companies took these responsibilities seriously and whether the owners of new properties were being made sufficiently aware of these potentially onerous financial responsibilities.

Finally, in conjunction with the RC Neighbourhood Plan Steering Group, RCPC has submitted comments on EHDC's draft Revised Local Plan. This extensive document will govern development of all types within the District up to 2036 so whilst it may seem like a challenging read, it will affect residents' lives for years to come.

#### **Proposals under HCC's Community-funded Initiative**

By the time you read this article, the planned works to install village-style gateway signage and more railings on Manor Lodge Road, and gateway and other signage and lining on Finchdean Road may well have been completed. These measures are designed to encourage traffic to slow down upon entering the village.

RCPC will then consider the apportionment of any further funding under this Initiative, the remit for which is limited in scope.

#### **Whichers Gate Common**

RCPC is finalising a Lease of Whichers Gate Common from Portsmouth City Council (PCC) as a way of safeguarding 'green spaces' within the Parish.

**Finally, please make time to read the minutes of the monthly Council meetings if you want to keep up to date with what's going on in the Parish – see the Council's website and/or local noticeboards.**

Our website also contains lots of information on the work of the Council as well as local events and history. If there's a particular event you'd like promoted on the website and/or on the Parish Council's Facebook page, please let us know.



## NOTES FROM EAST HAMPSHIRE DISTRICT COUNCIL

*Malcolm Johnson*

*Ward Councillor for all residents of Rowlands Castle*

By the time this edition of Village and Valley drops through your letterbox you will also have received this year's council tax notification. Nobody likes receiving this annual bill but something I would like to bring to your attention is the line that relates to East Hampshire District Council's element of your bill. You will see that there has not been an increase in EHDC's part of the charge while other elements have increased. This good fortune is because EHDC has been able to steadily reduce its running costs through internal efficiencies without reducing services to our residents. Also helping this zero increase in council tax has been the success of services sold to other authorities which are bringing in new streams of income. Additionally, the council's property investment portfolio is producing another income stream which helps to replace income lost by the removal of various government grants e.g. the Revenue Support Grant, as well as reduced income from business rates arising from outstanding appeals following the changes to business rates last year.

Some further good news from East Hampshire this year is the establishment of a new Community Grant Fund worth one million pounds. This fund will be used throughout the district to support agencies and small charities who do such excellent work helping our less fortunate residents. There will also be a new Welfare Fund worth some five hundred thousand pounds again dedicated to providing support in the community. These two new funds are all part of East Hampshire's new community welfare strategy for the coming year.

Another area of good news from East Hampshire District Council is the new waste management contract that will commence in early October. A new contractor has been appointed who will take responsibility for both waste bin collection and also handle grass cutting and street cleaning throughout the district. Added to that is the knowledge that the contractor will have more capacity to handle garden waste collections so those residents who have been waiting to get a licence for garden waste

collection will now be able to apply and get one when the new contract starts. There will be a number of changes when the new contractor starts so watch out for the pre-launch publicity later in the summer.

Many of you will recall that last year I mentioned the work that EHDC was undertaking in preparation for the new Local Plan that will become the planning "bible" for those parts of the district outside the South Downs National Park. Back in February a six-week public consultation commenced giving residents across the district a chance to see what is being proposed and offer comments. The public responses will now feed into the formulation of the draft document which will be subject to further public representation in June this year after which it will be presented to a government appointed planning inspector who will examine the plan and providing he/she finds it "sound", as I said above, it will become the planning "bible" for the district. This is expected to happen in December this year. A point of interest in the new draft plan is the concept of phasing development. The idea behind this new approach is to be able to control the rate at which new development takes place so avoiding what some see as turning areas into continuous building sites with no let up for residents. The National Park is currently having their Local Plan examined at present.

On the 2nd of May this year there will be a local election to elect a new council for East Hampshire. I am honoured to have been asked to stand once more as the ward councillor candidate for Rowlands Castle. I look forward to receiving your support in May. And finally, as I always end my notes, please remember that on the first Thursday of each month along with our Hampshire County Councillor Marge Harvey and a representative from the Rowlands Castle Parish Council, I can be found in the village café between 1100 and 1200. So, if you have something you wish to raise, we will be there. I can also be contacted at EHDC via email: [malcolm.johnson@easthants.gov.uk](mailto:malcolm.johnson@easthants.gov.uk) or by phone 92412096.

## ACTIVITY UPDATE

Marge Harvey

Dear Residents

I would first like to thank all of the residents who have sent cards or contacted us on the death of our daughter Joanne, it was really appreciated. Joanne was our autistic daughter and one of the reasons that I was asked to chair the Hampshire Autism Partnership Board.

It really has been eye opening for me when I talk to parents and autistic people and realise just how much support they need and how hard it is for them to get everything they are entitled to. That is where this committee comes in and we are now making such a difference to the ones who need it the most.

Recently, you will have heard about the closing of Orchard Close, which is a place for respite care for the most vulnerable in society and it has been put forward for closure to save money. As I am on the Health And Social care committee at Hampshire, myself and other councillors have fought to save this much loved facility and hopefully we will succeed.

I really think that if we had taken this to residents and asked if we should save this facility or pay for some of the other things that Hampshire do, residents would reply that we should save this facility and I will continue to fight for this going forward.

I have been trying to get many other things done in my division which includes Horndean. I have had many meetings with officers, with and without Parish Councils. In Rowlands Castle I have been supporting the Parish Council to get things done in our village and after having a meeting at Wichester with officers and the Parish Council representatives, I feel that we will get things done.

You will all have noticed that the double yellow lines

have been done on the brow of the hill in Redhill Road and I do feel that now it is much safer than before. The lines have also been done in Links Lane and Uplands Road and I am now trying to get some lining done in Finchdean Road to make the road on the corner safer.

The officer also said she would try and get a speed limit reminder put in place as the traffic really does go very fast there.

With all of this, I attend my committee meetings at Winchester and Parish Council meetings in Rowlands Castle and Horndean which keeps me very busy.

I also attend my surgeries in the Bumblebee cafe in the village on the first Thursday of every month and in Horndean on the third Thursday of every month, so as you can imagine, things are very busy!

If you would like to talk through any problems you have with either the County, District or Parish, then please come and visit us at the surgery and have a coffee or tea with us as we are all there to answer any questions you may have.

I look forward to meeting you all.



## ROWLANDS CASTLE NEIGHBOURHOOD PLAN PROGRESS REPORT

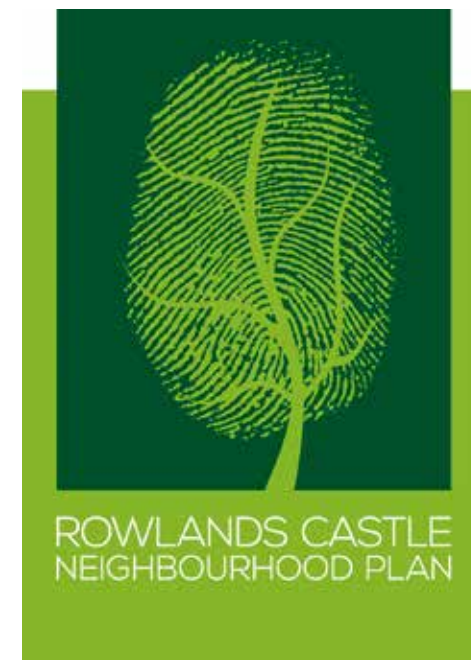
Ian Young

Steering Group Chairman

Thank you to everyone who took the time to respond to the 'Housing Needs Survey' questionnaires distributed to all households in the Parish last autumn. 376 responses have been completed and returned which compares favourably with returns for previous similar parish questionnaires. This one was specifically aimed at gathering your views about the type of new development that you would like to see in the Parish during the next planning period - from 2020 until 2036.

The questionnaire responses have been analysed and comments recorded to provide evidence for developing Rowlands Castle Neighbourhood Plan policies and where possible to provide feedback for influencing the content of the East Hampshire District Council (EHDC) Local Plan (LP). Many responders did not wish to see significant new development in Rowlands Castle in the near future, particularly because of current building developments and because of traffic and parking issues. Requirements for those in larger houses to downsize were identified.

Housing (and other) development proposals have been set out in the next set of Local Plans (LPs) which are now being developed separately by both the South Downs National Park Authority (SDNPA) and EHDC. The SDNPA LP is due to be adopted by the middle of this year. The first of two public consultations on the draft EHDC LP, including a consultation event in the Parish Hall at the end of February, was recently completed. Drawing on the questionnaire responses, the Steering Group (SG) has provided comments on the draft EHDC LP via the Parish Council. The SG objective continues to be to ensure that the Neighbourhood Plan and both Local Plans are fully 'joined up' and that they reflect



the needs of the Parish and the aspirations of its residents. The SG is now developing the NP policies on these lines.

There have been some recent changes within the Steering Group. I have succeeded David Holt as Chairman, while David remains as a member of the Group, and Cllr Frank Ball has succeeded Cllr Liz Longman as a member. A vacancy has also arisen to succeed Siobhan Edwards-Bannon in leading the Communication Working Group, covering consultation with people in the Parish. If you would like to join the SG to contribute in this, or any other way, or if you would like further information on development of the Neighbourhood Plan, please contact Gill Whatley at the Parish Office - by phone (02392 413044) or email ([projects@rowlandscastlepc.org.uk](mailto:projects@rowlandscastlepc.org.uk)).

The Steering Group's aim remains to develop the Rowlands Castle Neighbourhood Plan to meet its agreed 'Vision':

'To conserve and enhance the Parish of Rowlands Castle as an attractive community, whilst maintaining its separate identity, character and distinctiveness.'

# THE FUTURE OF THE ANNUAL FIREWORKS DISPLAY IN ROWLANDS CASTLE

The future of the fireworks display is in doubt, because of current health and safety guidance which advises the need for a second exit.

A working party, consisting of two members of the RCA, two councillors from RCPC and one member from the Recreation Ground Management committee, has been set up to look at the need for and the feasibility of putting in a second exit from the recreation ground.

This is a summary of the current Statement by the appointed Working Party. March 2019.  
The full statement can be seen on the RCA and RCPC websites.

## BACKGROUND

1. There has been an annual fireworks display on the Recreation Ground for forty years. The numbers of people attending the event grew substantially in 2016 and 2017, with between 3,000 and 4,000 attending, leading to concerns about the safety of the event.
2. In particular, there is guidance from the Health and Safety Executive (H&S) that such an event on the Recreation Ground requires there to be two distinct and separated exits for use in an emergency.
3. The Firework Display brings residents' families together as well as business to local shops and pubs.
4. The issue was raised with the Rowlands Castle Parish Council (RCPC). Discussions then took place with the Safety Advisory Group (SAG), coordinated by East Hampshire District Council, (EHDC). There was insufficient time to develop plans and put in place a second exit in 2018, so RCPC and the RCA took advice and agreed special arrangements endorsed by the SAG, for 2018 only, to allow the Display to take place.
5. The plans for 2018 included making the Display a ticket-only, limiting numbers to 2,000. A considerable amount of work was carried out by the RCA to plan the display, including having an event management plan, and risk assessments in place, hiring security staff, organising ticket sales and having volunteer stewards.
6. In the event there was an excellent Display last November with 2000 people attending.
7. A joint Working Group has been set up with 2 members each from the RCA and RCPC and 1 member from the Recreation Ground Management Committee. Its objective is to consider the feasibility of creating a 2nd exit from the Recreation Ground.
8. The Summary below sets out proposals for a 2nd exit in order to gain feedback from the Rowlands Castle Community and allow the RCPC to make an informed decision in due course.

## SUMMARY OF PROPOSAL

1. In light of advice, the Working Group recommends that future fireworks displays can only take place on the Recreation Ground if a 2nd pedestrian exit is created for use in an emergency only.
2. The proposed 2nd entrance would be put in place between two existing oak trees approximately opposite the entrances to 8 and 10 The Fairway. The entrance would replace 4m (13 feet 4 inches) of chain-link fencing and hedging.

3. The proposed entry gates would form a 4m (13'4") wide gateway comprising a pair of timber five or six bar field gates 1.2m or 1.5m (4 or 5 ft) high.
4. It would provide a secondary pedestrian only exit which would be locked when not required.
5. With a second exit in place, the numbers attending the display would still be limited to 2,600.
6. The ground between the gate and the road would be reinforced with ACO GroundGuard (or similar) and seeded with grass to maintain permeability and not exacerbate surface water drainage. The same would be done from the gate into the Recreation Ground for approximately 2 metres. The road kerb would be lowered.
7. There would be a consequent loss of 4m of hedging. The existing hedge is patchy, and provides only partial screening.
8. It is planned to plant an area of small trees, shrubs and wild flowers within the recreation ground to offset this loss of natural habitat. Shrubs could be placed in planters on the recreation ground side of the gate to provide screening.
9. No changes are proposed to any parking restrictions.
10. Emergency vehicles would use the existing entrance to the Recreation Ground.

## THE CURRENT SITUATION

1. An application is in hand to the authorities at EHDC for a licence (under the Hedgerow Regulations 1997) to grant permission to remove the hedge and replace it with gates.
2. An application is in hand to Hampshire County Council for permission to modify the verge and install a dropped kerb to allow the gates to be installed.
3. An architect has been commissioned to draw up detailed plans for a possible second exit.
4. Concerns have been expressed by some local residents that a second exit would increase the risk of flooding to the Fairway. Accordingly, RCPC has commissioned a drainage report to be carried out by an independent consultant.
5. Local contractors have been asked to give provisional quotes for the cost of carrying out the work.

## NEXT STEPS

In due course, RCPC will make a decision on whether to allow the Firework Display to continue, through the creation of a 2nd exit from the Recreation ground. In order that all residents can be fully informed of the issues, there will be a process of consultation as follows:

- This statement forms part of the consultation process.
  - Information will continue to be made available about the proposals on the RCA and RCPC websites.
  - There will be further public discussion on the issue at the Annual Parish Meeting on the 15th April. The architect's plans will also be on view at this meeting, and if possible, will also be made available on the websites noted above.
1. Anyone wanting to make comments on these proposals can do so by emailing [Feedback@rowlandscastle.com](mailto:Feedback@rowlandscastle.com) (Please be aware that your email and contact details may be read by members of the WP and of RCPC. However, contact details will not be passed to any other party).
  2. After the Annual Parish Meeting, RCPC will take all the facts into account and will make a final decision on whether or not to go ahead with putting in a second exit from the Recreation Ground.  
Issues raised by some local residents
  3. The 2nd exit has been discussed at several RCPC meetings and at a special meeting held by the RCA immediately after the AGM in February 2019. Since the Working Group was set up in late 2018, a number of objections to the possibility of a 2nd exit have been received. Some discussions between members of the Working Group and some local residents have also taken place.
  4. A note of the particular issues that have been raised are set out on the RCA and the RCPC websites, together with comments from the Working Group.



## / COMMUNITY EVENTS

NOTICE  
BOARD

### RCWI

7:30pm  
Second Monday of each month  
No meeting in August  
Parish Hall, Links Lane

### GARDENING CLUB

Spring Show on Saturday April 13, 2pm - 5pm  
St John's Church Hall

### BELTAIN FESTIVAL

Saturday 4th May 2019, 4.30 - 10pm  
Butser Ancient Farm  
An afternoon/evening of entertainment and refreshments culminating with the burning of the wickerman at dusk.

### VILLAGE FAIR

Saturday 6th July  
The biggest village event of the year.  
See also page 53

### WOMANS FELLOWSHIP

2:00 - 4:00 pm  
First and third Tues afternoon of the month.  
No meeting in August.  
St John's Church centre.

### DRINK AND DRAW

Saturday 11th May  
5.00 - 6.30pm  
Draw, drink and merrily support this fundraising event for the Octagon Defibrillator Fund.  
Led by local artist, £10 includes materials, model and a drink plus some drawing exercises to help you draw some awesome portraits. All abilities welcome, come and support a local cause.

### ST JOHN'S SCHOOL SUMMER FAIR

Saturday 15th June 2019 from 12 to 3pm

### NATIONAL TEA DAY

Tea tasting masterclass at Staunton Country Park  
Sunday 28th April 2019  
11.00am to 12.30pm or 2.00pm to 3.30pm  
See also page 45

### CRICKET CLUB FUNDRAISING

Saturday 13 April  
7:30pm at the Parish Hall  
Teams of up to 6, £10 per team member, includes fish and chips. Bowmans Swift available but please bring your own nibbles and other drinks.

### RVS LUNCH CLUB

12:00 pm - 1:30 pm, every Thursday, Parish Hall  
Contact: Carol Milford 02392 412321

### ALTON ABBEY

OPEN DAYS  
Saturday & Sunday  
April 27th & April 28th  
12 noon - 5pm  
Admission £3 / Tea and Cake £3  
Mosaic demonstration / Beautiful Stationery  
Second-hand books / Hadeel Palestinian Fair Trade products for sale  
Organ/Piano Recitals 3 p.m. both days  
Friends of Alton Abbey  
Registered Charity No 284876

## / SAVE THE DATE - RCA EVENTS FOR YOUR DIARY

### MAYDAY PICNIC & BBQ ON THE GREEN

**MONDAY 6TH MAY 2019**

**12:00 - 2:00 pm**

Fun for all, including music by the Blendworth Brass Band. BBQ on the forecourt of the Fountain Inn. Collection in aid of the Rowan's Hospice.  
Contact: [secretary@rowlandscastle.com](mailto:secretary@rowlandscastle.com)

### CHILDREN'S CHRISTMAS PARTY

**SUNDAY 15TH DECEMBER 2019**

**11:00-1:00 pm**

**Parish Hall**

The annual RCA Children's Christmas Party in the Rowlands Castle Parish Hall. For children 0-6 yrs (with an adult). Magic Mikey entertainment, lots to eat and Father Christmas. £1 per child and a wrapped and labelled present for Father Christmas to give.

### RCA QUIZ NIGHT

**Saturday 19 OCTOBER 2019**

**Parish Hall**

Always popular, come for the fun, food and prizes  
Contact: [secretary@rowlandscastle.com](mailto:secretary@rowlandscastle.com)

### LITTER PICKING

Litter Pick on the **last Saturday of each month**.  
We meet at the Flagpole on the Green at 10am on the Saturday with our own picker sticks, yellow hi viz vests and rubbish bags. Wear garden gloves as well!  
Key areas covered are The Green, Redhill Road and the Station approach.

Free, bacon butty in The Fountain pub afterwards!  
We'd like to say a big thank you to Mary and Kerry for offering to feed the helpers!

We shall send out a reminder for these Litter Pick days via the Grapevine, during the week before.

### FIND OUT WHAT'S HAPPENING IN THE VILLAGE SIGN UP TO THE GRAPEVINE

Grapevine is the village messaging service that sends out emails to those that have signed up about events and important information connected to the village.  
To sign up, send a blank email to:  
[grapevine@rowlandscastle.com](mailto:grapevine@rowlandscastle.com)





# THE ROWLANDS CASTLE ASSOCIATION

Martha Dombey

## The Rowlands Castle Website

The Rowlands Castle website has been running for some years now and is moderated by the Rowlands Castle Association. Here you will find information about all aspects of the village from the churches and shops to the various clubs and points of interest. We welcome photographs about the village and the events held in the village that we can post on the website. This is the link to the Rowlands Castle Website [www.rowlandscastle.com](http://www.rowlandscastle.com)

The website is currently being updated and if you have any up to date information or changes to add please email: - [webmaster@rowlandscastle.com](mailto:webmaster@rowlandscastle.com)

## The Grapevine

The Grapevine email system is run by the Rowlands Castle Association committee. It is a channel of communication for the village of Rowlands Castle. It is an automated system and is moderated by two members of the committee to make sure that the items posted are of value and interest to the villagers. The Grapevine posts important notices, messages, events and news. Items of a commercial or fundraising nature are not accepted. There are approximately 600 villagers that view or post on the RCA Grapevine. To date many villagers have found this to be a reliable and useful tool for reminders of events around the village.

To find out how to receive Grapevine postings go to this link: -[www.rowlandscastle.com/RCA/grapevine4.htm](http://www.rowlandscastle.com/RCA/grapevine4.htm)

## The Rowlands Castle Facebook page

The Rowlands Castle Facebook page is run by members of the committee and anyone can send in articles, events, news and photographs to be moderated and posted by the RCA. The RCA would appreciate any new photos of the village, so please send them by private message so they can be moderated and added. One of the highest numbers of audience hits to this page happened in March 2018 when we posted a picture of the snow at St. Huberts church. The photograph was taken by the RCA Magazine Editor Kelvin Shafli and received 2.6 thousand views in one day!

RCA Facebook page: - <https://www.facebook.com/rowlandscastleassociation/>

## The Village Noticeboard

The Rowlands Castle Association notice board has recently been renewed and is located outside the Londis shop in the village. Here the RCA post notices about events that they organise, the May Day Picnic on the Green, annual fundraising Quiz Night, Fireworks event and Rowlands Castle Children's Christmas Party. The minutes of the committee meetings are also posted here for everyone to view.

To contact the RCA about anything go to: -<http://www.rowlandscastle.com/RCA/RCA%20Committee.htm>

## / LETTERS TO THE EDITOR



### The Future of the Recreation Ground

The Recreation Ground was acquired in 1924 as a playing field for the benefit of the inhabitants of Rowlands Castle and the immediate neighbourhood. It continues to this day to be a fantastic facility for use by all. However, the Parish Council is now considering changes that will have a potentially negative impact upon the whole village and especially on those residents living adjacent to the Ground.

A fireworks display has been held for the benefit of the village for many years. Recently the numbers have increased substantially, attracting people from far and wide. In 2018 the crowd size had to be capped due to Health and Safety Regulations. A second exit is now being proposed to allow crowds far larger than is required to serve the village alone.

A Working Group was set up by the Parish Council to examine the proposal. Its work is still ongoing but it has been established that it will require a large sum of public money to be spent. This will be 'difficult to justify unless there is a change of use of the Ground to allow more frequent large crowd events'.

The consequences of a 2nd exit will be:  
Additional congestion affecting the whole village.  
Removal of 5m wide section of a 70yr old hedgerow with the loss of important wildlife habitat.  
Extensive damage to the roots of 2 mature oak trees resulting in their premature death.  
Exacerbation of the flash flooding in The Fairway – four times in the last 10 years.

This proposal will alter the character of parts of the village. Do we need a venue to stage large events which may only last for 30 minutes once a year?

Is it in the best interest of the village and good use of public money?

Andrew Spruell / David Denny

**DISCLAIMER:** The views and opinions expressed in LETTERS TO THE EDITOR are those of the author/s and do not necessarily reflect those of the RCA or the editor.

### Recreation Ground – A Second Exit

Dear Editor,

After reading the paper published by the Parish Council working party\*, including the annex, I believe a recreation ground second exit, for emergency use only, would, on balance, benefit the village. I trust the current Parish Council to take into consideration all local comments and mitigate as appropriate.

Using the "Use It Or Lose It" principle, I believe this health and safety improvement to the recreation ground would protect the village from the risk of a future cash-strapped Parish Council with an under-used recreation ground, deciding to avoid raising Council Tax by selling off the recreation ground to a housing developer.

Kind Regards

A Concerned Resident (Name and address supplied)

\* [www.rowlandscastlepc.org.uk/rowlands-castle/latest-news/](http://www.rowlandscastlepc.org.uk/rowlands-castle/latest-news/)



Photo provided by: Andrew Spruell / David Denny

## 75th D-DAY ANNIVERSARY

Alan Drinkwater



Rowlands Castle Heritage Centre commemorates the 75th anniversary of the D-Day Landings and to reflect on the significance of the Village's part in their preparation, as displayed in our iconic model railway.

This article recalls to critical decision of the 4th June 1944, when General Eisenhower and his staff ordered the launch of a massive joint services assault across the Channel, for two days later, on the 6th June. The article has been edited, courtesy of David Stafford, from his book "Ten Days to D-day".

### "O.K., we'll Go."

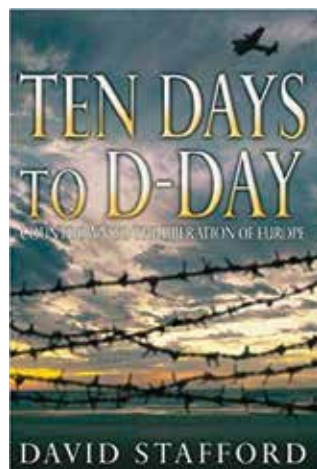
The order, the climax to months of planning, released the massive assault on the Normandy beaches

"Shortly before dawn on 4th June, Eisenhower dragged himself from his trailer to hear what Stagg, the Chief Meteorologist, had to say about the weather. As he drove the short distance through the park to Southwick House, the stars lit the sky.

But the meteorologist delivered bad news. Overnight he'd been studying the latest reports coming from the Atlantic and checking them against historical record. Fate was now dealing them a rotten hand. "In all the charts for forty or fifty years I had examined" he recorded, "I could not recall one which at this time of year resembled this chart in number of depressions it portrayed at one time." The outlook was more like winter than summer.

"Do you foresee any change?" asked Eisenhower. "No," replied Stagg. It was Ramsay's turn. "When do you expect the cloud cover to arrive?" queried the Neptune commander. "In four - or five-hours' time," answered the RAF man. Then Stagg withdrew while the D-Day commanders deliberated. Montgomery was still for going. Ramsay was neutral. But Leigh-Mallory warned that with the low cloud cover the air forces could carry out only a fraction of their tasks. This factor, above all, decided Eisenhower. Effective air cover was vital for the troops on the ground. With no one around the table dissenting, he ordered a twenty-four-hour postponement. They would take a second look at the situation that evening. Orders were immediately issued to all commands, and ships already steaming towards the Channel turned back.

Before the ships had struggled back to port, Stagg's dismal forecast came true. The wind rose and angry clouds massed overhead. At 11:00 a.m. a gale warning was issued for the Channel. For thousands of seasick troops now trapped in their landing craft and unable to disembark, it was a truly miserable day.



At 9:00 p.m. Eisenhower and his commanders-in-chief met again to discuss the weather. Outside, the wind was howling and rattling the windows, the trees tossing around wildly. Earlier, the weathermen had held a fraught two-hour meeting arguing among themselves about the outlook. Finally, Eisenhower turned to Montgomery. "Do you see any reason why we should not go on Tuesday?" he asked. "No," replied Montgomery emphatically. "I would say, 'Go' ". "It's a helluva gamble, remarked Bedell Smith, but it's the best possible gamble." Stagg and his team of meteorologists withdrew.

For an agonizing two minutes the Supreme Commander, hands clasped behind his back, his shoulders hunched and head sunk on his chest, walked slowly up and down the room. Finally, he stopped and looked up. "The question is," he asked, "how long can you allow a thing like this to just kind of hang out there on a limb?" Another long minute followed. Finally, he said, "I'm quite positive we must give the order. I don't like it, but there it is. "Let's go."

When he finally retreated to his tent to snatch a few hours' sleep, He could see the sky was overcast with low clouds. It was raining heavily, and the wind was tossing around the branches. What a paradox, he thought. That morning, when the weather had been good, D-Day had been postponed. Now, in a thrashing storm, it had been given the go. Ahead. It must all seem a little mad, he thought.

The rain was almost horizontal, and the wind was buffeting his trailer when Eisenhower got up at 3:30 a.m. and made his way to Southwick House. Stagg, the Meteorologist, had already been working the scrambler phones to get the latest weather reports. After a welcome mug of hot coffee, Eisenhower and his commanders settled down in their comfortable chairs and got down to business. All were in battle dress except Montgomery, who opted for corduroy trousers and a high-necked fawn pullover. No one was smiling. This was the decisive moment. Either they would go ahead with the invasion, or they would have to fix a new date, a move fraught with incalculable consequences.

Quickly, Stagg put them out of their misery. "Gentlemen," he began, "no substantial change has taken place since last time but as I see it the little that has changed is in the direction of optimism." Next to him, Eisenhower had been sitting taut and tense. Now, as the Allied commander-in-chief listened to the details, his face broke into a smile. "Well, Stagg," he said, "if this forecast comes off, I promise you we'll have a celebration when the time comes." There were only a few questions. Then he uttered the historic words: "OK, we'll go." It was five o'clock. The irrevocable decision had been made. Tomorrow, June 6, 1944, would be D-Day.

As the group dispersed, Bedell Smith came up and gripped the weatherman by the arm. "You've given us a helluva break, Stagg,"

Eisenhower was showing no doubts about D-Day, whatever he privately felt. While the Prime minister was reading his Ultra intercepts and drafting a message to Stalin, the Supreme Commander was exhibiting the utmost public confidence. That morning he went down to South Parade Pier in Portsmouth and watched the loading of British troops onto landing craft, smiling cheerfully and chatting casually with the men. When he returned to his trailer he played a game of checkers with Harry Butcher. "Just as I had him cornered, with my two kings and his remaining king," recorded Butcher, "damned if he didn't jump one of my kings and get a draw."

Edited by Alan Drinkwater: Editor, RCHC

# WOMENS FELLOWSHIP IN ROWLANDS CASTLE

A group of very enthusiastic local ladies meet twice every month with the exception of August. We meet on the 1st and 3rd Tuesday afternoons between 2 and 4pm, at St John's Church Centre at the top of Redhill Road.

We always begin our meetings with a rousing hymn and continue with a programme of activities suggested by members - including games, quizzes, craft, debates, beetle-drives, What's My Line, also seasonal meals and some outings. We round off the afternoon with a cuppa and posh biscuits. We hold our AGM every November. Members will make you most welcome if you would like to join us.

Please contact Gill at St John's Church Centre Parish Office on 92410111

## ROWLANDS CASTLE RVS LUNCH CLUB Together for Older People

Rowlands Castle RVS Lunch Club continues to meet every Thursday in the Parish Hall.

It's a great way to socialize and meet old and new friends, catching up on each other's news and discussing many events (Very often how the world is changing!) We really do have a sociable time, sharing a meal together and our wonderful volunteers try to make it a special time for everyone.

Currently we are at maximum with 32 service users however if anyone would like to join us on Thursdays from 12:00pm to approx. 1:30pm (no rush to get away) we will try and find space for them as changes do occur regularly.

Wherever possible we offer to pick up and take home our service users who are no longer able to drive themselves. If you have some time to spare, maybe once a month or more, please contact us and we will guide you through joining the Royal Voluntary Service.

For more information please contact  
Carol Milford 02392 412321 or Sue Leonard 02392 412108

Carol Milford RVS Volunteer Coordinator and Treasurer  
Sue Leonard Assistant RVS Volunteer Coordinator



## / D-DAY ANNIVERSARY

### VILLAGE LIFE AS AN EVACUEE



I was 8 years old when I was moved out of my home in Holland Road, Southsea to Redhill in Rowlands Castle. This was to avoid the German bombs falling on Portsmouth.

As I was at an impressionable age the build-up to D-Day was very exciting as the village had British and Canadian troops milling around.

I can recall the build-up to the invasion and how I became the first casualty. My uncle Bill had a dairy at Links Lane near The Green and I used to love playing all over the area. The soldiers, British and Canadian were everywhere, in the woods, in tents on The Green and in Standsted Park.

I remember my uncle complaining about the Canadians, whom he described as 'great big fellas', because they used to come to the dairy and drink all his milk.

There were also some boys evacuated there from Battersea who I met again in 2002 at the Village Fair. As they all had name badges on it was easy to find them and some remembered me because of my auburn hair. I found out that some worked at the dairy and on the local farms. My Mum worked there too. I had a little cart which I used to push around and I would go in and out of the soldiers' camp with my little mate and pick up .303 bullets and put them in my truck.

One day mum found them and she gave me a good telling off. She marched me down the hill and I can remember her throwing some of them over the high hedges. Anyway, the soldiers got their bullets back.

My next encounter with the Army was when I climbed over the wall at Stansted Park near the railway bridge and I fell down on the other side. I cut my arm on some sharp flints and cried. The soldiers picked me up and took me to a first aid post. I was bandaged up and still have the scar now, making me the first casualty before they suddenly moved out.

As the years went by I was at work having a cup of tea with my fellow workmates and we got talking about Rowlands Castle and I mentioned being an evacuee and one of the chaps sitting next to me said he was there as a young soldier at Stansted Park waiting to go to Normandy. He didn't go into detail he had seen enough. He is now in his 80s living not so far away from me in Portchester. Small World!!

Not so long ago I went back to Rowlands Castle and walked down Redhill and stood outside the house. Whilst there a small boy of about 8 came out on a four-wheel cart and then a girl of about 10 who could of been my sister as she was back then.

'WW2 People's War is an online archive of wartime memories  
contributed by members of the public and gathered by the BBC.  
The archive can be found at [bbc.co.uk/ww2peopleswar](http://bbc.co.uk/ww2peopleswar)'

Contributed by smilingStallardBEvac  
People in story: Brian Stallard  
Location of story: Rowlands Castle, Hampshire  
Background to story: Civilian  
Article ID: A2901052  
Contributed on: 08 August 2004

CONTENT REPRODUCED IN ACCORDANCE WITH STIPULATED GUIDELINES AS PROVIDED BY BBC.



# Protect your family's health

Our friendly and approachable GPs offer:

- ✓ Chicken Pox vaccination
- ✓ Comprehensive health checks
- ✓ Flu vaccination ✓ Corporate services



Call **01243 766 447** to arrange your appointment in Emsworth and Chichester.

[www.southdownsprivatehealthcare.co.uk](http://www.southdownsprivatehealthcare.co.uk)



Making time for your health

## Independent private GP service



### Southdowns Healthplan

Offering you outstanding healthcare exactly when you need it.

18-40 years Plan	40-60 years Plan	60+ years Plan	Couples Plan	Family Plan
£35 <sub>pcm</sub>	£45 <sub>pcm</sub>	£57 <sub>pcm</sub>	£75 <sub>pcm</sub>	£99 <sub>pcm</sub>
<ul style="list-style-type: none"> <li>• Free annual healthcheck • Free Flu Jab • Up to 10 GP appointments</li> <li>• Free administration of prescriptions • Free administration of referrals</li> <li>• Discounted prices on advanced health checks • Priority appointment booking</li> <li>• Online access to your letters and results</li> </ul>				

Visit [southdownsprivatehealthcare.co.uk](http://southdownsprivatehealthcare.co.uk) for more details and to join Healthplan today

97 Havant Road, Emsworth,  
Hampshire, PO10 7LF

The Boxgrove Clinic, The Street,  
Boxgrove, Chichester, PO18 0ES

Tel: 033 092 02000 | 01243 766447



## ROWLANDS CASTLE ARTISTS AT THE EMSWORTH ART TRAIL

*Sylvia Tomkinson*

Six of the residents of Rowlands Castle and Finchdean are taking part in this year's Emsworth Arts Trail. Taking place over two weekends 27th & 28th April and 4th, 5th & 6th May, the trail gives the public a chance to visit artists' studios, halls, pubs, sailing clubs and galleries to meet and talk with the artists themselves as well as view and possibly purchase their masterpieces. It is quite possible that you will pick up a work of art that will one day become an heirloom.

Further details about the Arts Trail and these artists will be in the Trail Guide which will be available in the shops and pubs in Rowlands. If you cannot find one call Sylvia on 412980.

Our local group of six include:-

Andrea Martin – Andrea creates both detailed pen illustrations and vibrant paintings. She will be exhibiting originals, prints and cards. **1**

Deborah Richards – unique monotypes, handmade prints, paintings, drawings, ceramic sculpture and cards will be on display. **2**

Gail Styles – creates impasto oil paintings and prints of natural landscapes. **3**

Mike Styles – a potter making a variety of very decorative hand thrown pots and ceramic items. **4**

Sylvia Tomkinson – a jeweller using Silver, Gold and semi-precious stones to create several distinctive collections. **5**

Jonquil Tonge – a jeweller using silver wire, exotic woods and sea glass.. The curved lines of silver jewellery have moveable beads. **6**

[www.emsworthartstrail.org.uk](http://www.emsworthartstrail.org.uk)  
Facebook: Emsworth Arts Trail 2019

## READY FOR TAKE OFF

*Laura Miles*  
Press officer

The annual Emsworth Arts Trail is set to scale new creative heights this year thanks to a record-breaking number of artists and groups taking part. Venues throughout the town will see a record-breaking number of exhibitors with a total of 107 artists and groups exhibit during the last weekend in April and first in May.

Since the trail began in 2001, with just a handful of artists exhibiting in their home studios, the event has grown to include many local businesses and community venues. Artists and makers exhibit their work in local shops, halls, pubs, sailing clubs, home studios and pop up galleries; resulting in a creative and colourful voyage of discovery.

With the majority of venues located within a mile of the town centre, visitors often make a family day out of it by walking or cycling along the trail. Plus, with

such a wide variety of work on show, there is something to interest everyone from painters, printmakers, photographers, textile artists, wood carvers and ceramicists to jewellers and sculptors.

In order to further the trail's credentials as a low-carbon and environmentally friendly event, 2019's guide is going to be printed on sustainable FSC-certified paper for the first time.

Contacts:

Carol Price, chairman: [info@emsworthartstrail.org.uk](mailto:info@emsworthartstrail.org.uk)

Tel: 01243 372610

Julie Turner, publicity: [julieturner.pr@me.com](mailto:julieturner.pr@me.com)

Tel: 07971 989933

Laura Miles, press officer: [laurasmilesdesigns@gmail.com](mailto:laurasmilesdesigns@gmail.com)

Tel: 07759 835446

*Artists gather to mark the launch of the Emsworth Arts Trail - Photo: Angus Peel*





## / LOCAL CHARITIES

### JOIN CAKES4CANCER AND RAISE DOUGH FOR LOCAL PEOPLE LIVING WITH CANCER

*Charlotte von Sicard*  
Regional Community Manager

If baking tickles your (fondant) fancy, Wessex Cancer Trust, would love you to host a Cakes4Cancer event this May and raise dough for local people living with cancer.

Rolling out across the entire Wessex region between 6 and 12 May, Cakes4Cancer is a really simple way to come together with friends, family or colleagues and 'bake' a difference by asking for a donation in return for a cuppa and cake.

Charlotte Von Sicard, Wessex Cancer Trust's Community Manager, said: "We're passionate about

community at Wessex Cancer Trust, and believe everyone living with cancer should be able to get free and local emotional support whenever they need it. Cakes4Cancer is all about people coming together to enjoy something delicious for a great cause. Your event can be as big or small as you want. You could put on a coffee morning at work, host an afternoon tea with friends or invite neighbours to come along to a bake sale. Whether it's faked or baked, every cake sold could help change someone's life for the better. It really is a piece of cake."

The charity has put together a free kit containing everything you need to host your own event, including a tablecloth, balloons, posters, cake toppers, game ideas and recipe cards. Sign up at [www.wessexcancer.org.uk/forms/cakes4cancer-pack](http://www.wessexcancer.org.uk/forms/cakes4cancer-pack).

Wessex Cancer Trust is a charity dedicated to providing practical and emotional support to anyone living with cancer in Hampshire, Wiltshire, Dorset and the Isle of Wight, and in 2018 helped over 11,000 people throughout Wessex.



## / LOCAL ARTS

### PAINTING SOCIETY

*Jan Roblin*

A varied programme for members since October included Workshops run by members. These proved popular, a few of the subjects were skies, boats and the painter John Vettriano.

Life and Portrait models who posed for members made for challenging and worthwhile afternoon drawing sessions.

Visiting artists for the nine Evening Demonstrations used a variety of mediums including watercolours, pastels, oils and acrylics. All the artists passed on many tips on their painting skills. Each gave useful advice for those attending on the products and equipment they used.

The RCPS Annual Sale and Exhibition takes place on the 18th/19th May in the Parish Hall, between 10am-5pm with no admission charge. Everyone is welcome to come along to view and will be given an opportunity to vote for the 'Best in Show Painting'. If wished there is an chance to purchase paintings, folios and cards in a

wide range of mediums and techniques. Visitors can enjoy refreshments and cakes made by members and as in previous years a tombola will be held. Locations of our Summer Painting and Picnic days for 2019 are:

30th April	Stewarts Abbey Gardens
14th May	Fort Brockhurst
28th May	Petersfield Physic Gardens
11th June	Itchenor
25th June	Wickham Water Meadows
9th July	Lavender Fields Nr Selborne
23rd July	Butser Ancient Farm
6th August	Bishops Waltham Palace
20th August	Chichester Marina
3rd September	RSPB Pagham

Meeting 10 am at the appropriate car park.

RCPS meet on Tuesdays. All art sessions are free for yearly membership of £30. Non members are welcome to along to any session, cost for Workshops £3, Life/ portrait drawing and Artist Demonstrations £5. For further information please contact John Davis on 01243 371662, or email Jan at [paintjr57@gmail.com](mailto:paintjr57@gmail.com). Website address <http://www.rowlandscastlepaintingsociety.co.uk/>

**Pilates**  
Rowlands Castle  
Parish Hall  
Wednesdays 7 – 8 pm

**WHAT CAN PILATES DO FOR ME?**

**Develops:** Long, lean muscles & core strength

**Promotes:** Strong & flexible spine, health and well-being

**Benefits:** Improved Posture, Balance, Mobility & Muscle tone

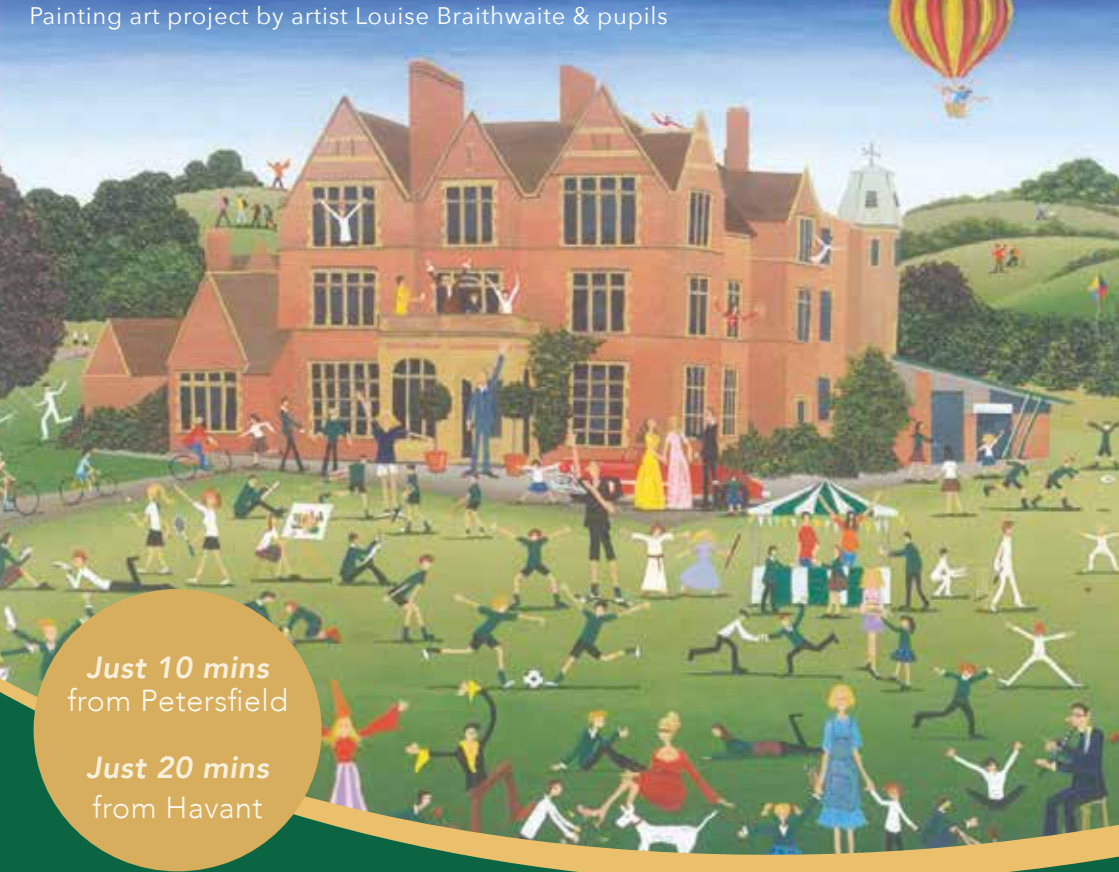
Small, Friendly, Mixed-Ability Classes

Contact Erica for further information  
Tel 07538 077619  
or  
[kittenpower90210-pilates@yahoo.co.uk](mailto:kittenpower90210-pilates@yahoo.co.uk)

Medical advice should be sought before starting any form of exercise if you have any existing medical condition or injury







Just 10 mins  
from Petersfield

Just 20 mins  
from Havant



# DITCHAM PARK SCHOOL

Excellence in education from 4 to 16 years  
in a stunning location on the South Downs.

Scholarships and Bursaries available.

Petersfield Hants GU31 5RN

Call us on: 01730 825 659 [www.ditchampark.com](http://www.ditchampark.com)

## / GARDENING CLUB

# GROWING AND GARDENING IN 2019

*Dave Mitchell*  
Chairman

Another year is underway for the Gardening Club, meeting every third Wednesday of the month at The Church on the Green 7.30pm until about 9pm with guest speakers. All welcome, members free, guests £3 including coffee.

Speakers so far have highlighted flowers for bees and how to be bee friendly, Easy veg growing & how to work in harmony with your garden (and relax), followed in March by a visit by Lordington Lavender highlighting the processes and products from their successful business at Lordington just over the hill from us. April will be a hanging basket demonstration by Gloria Robinson with plants for sale, and May will be 'Organic Gardening' by Paul Templeton.

Excitement is growing as we head towards the Spring Show on Saturday April 13 - St John's Church Hall. Door entry £1 - competition entries free - details and entry forms on RCA website. Plants, flowers, photographs, paintings and children's categories plus refreshments, tombola etc. Nothing too serious, just enter what you've got.

The July 17 & August 21 meetings are replaced by daytime garden visits. A chance to relax in the sun (hopefully) in someone else's garden.

If you are new to the village - welcome - especially those moving into a new house - we may be able to help you reclaim the desert - your garden - left

by the developers, or the jungle left by the previous owners (or at least lend a sympathetic ear). Come and meet us at the show, or come along to a Wednesday meeting.

Further details David Mitchell (Chairman)  
[david@mtchl.com](mailto:david@mtchl.com) or visit the RCA website  
[www.rowlandscastle.com/-social & cultural](http://www.rowlandscastle.com/-social&cultural).

Admission £1  
Children Free

Free Parking

## ROWLANDS CASTLE GARDENING CLUB

### SPRING SHOW

**SATURDAY 13TH APRIL**

**2PM TO 5PM**

**AT ST JOHN'S CHURCH HALL**

Refreshments: Competitions: Floral Art  
Photography: Tombola

Schedule and entry forms available from the Hardware shop or online at:  
[www.rowlandscastle.com/culturalsocialdir/rcgc\\_main.htm](http://www.rowlandscastle.com/culturalsocialdir/rcgc_main.htm)



## VILLAGE MEETING PLACES TEA TOWEL FOR CHARITY

Mary Jane Lomar

Taking my daily walk round the village and seeing many people chatting gave me the idea to produce a Tea Towel depicting all the places where residents meet

So many people ask if there is a Castle. Here I show a map of the area behind Deerleap. Repairs to the flint wall on the south side of the Green is believed to have used some of the flints from the castle ruins. Behind the wall lie the ditches and mounds of the Castle visible through the mantle of trees. For the Castle I drew the idea from a clay model thought to have been made at the Brickworks and now in Bursledon Museum. The knight is just for fun!

Our Heritage Centre is the proud owner of an iconic Model Railway on show whenever a suitable venue is found, previously at Stansted Park. The Centre invites donations of items connected to the history of the village and is collecting residents personal stories. All the places on the Tea Towel are in constant use where residents meet and exchange news. Unfortunately I was unable to include The Golf Club and The Veterinary Surgery and other venues.

On sale in the Bumblebee Cafe and Rowlands Hardware the Tea Towel raises money for the Pulmonary Hypertension Association. PH affects all ages and means high pressure in the lungs causing chronic breathlessness.



## EMSWORTH FLOWER CLUB PRESENTS CHEQUE TO CANINE PARTNERS

Pat Shergold, Committee Member

Every year the ladies of Emsworth Flower Club fundraise for a different local charity. During 2018 the chosen cause was 'Canine Partners'. The money is predominantly raised at Stansted Park during the summer Garden Show and Christmas Fair. This is done by decorating the Chapel with themed floral displays. The summer theme was 'Our Hobbies' and 'Christmas a Time for Giving' in November.

At the club's AGM in February, a cheque for £3,276.52 was presented to Canine Partners. It was received by Nicola and her partner Flora, on behalf of the charity. Several lady residents of Rowlands Castle are active members of the club and would be very happy to have other local ladies join us.



Emsworth Flower Club meets in St James Church Hall, Emsworth at 2pm on the 4th Friday of the month, Jan - June and Sept - November. New members and guests are welcome. If you love flowers, come to one of our meetings and watch a demonstration.

For more information telephone Vanessa 02392 789282 or Email [egfloradora@googlemail.com](mailto:egfloradora@googlemail.com)  
Website:  
[Emsworthafternoonflowerclub.wordpress.com](http://Emsworthafternoonflowerclub.wordpress.com)







Tidy, thorough and professional chimney and flue cleaning service

**Telephone:** 07731 525673  
**Email:** [info@joannathesweep.co.uk](mailto:info@joannathesweep.co.uk)  
**Website:** [joannathesweep.co.uk](http://joannathesweep.co.uk)



## YOU TOO CAN HAVE A SAY

All content for this magazine is provided by readers like you and new contributions are most welcome.

### CONTRIBUTION GUIDELINES

The Village magazine is published three times a year by the RCA. The aims of the RCA are to act as a channel of communication for the village, to conserve its character and to enhance the life of its residents.

Contributions for publishing are welcomed however, please note that all materials should be submitted by the following dates:

**SPRING issue: 18th March**

**SUMMER issue: 18th June**

**AUTUMN issue: 18th October**

#### PLEASE NOTE:

*Due to printing deadlines, late submissions cannot be considered for publication.*

Contributions should be between 200-300 words, and you should provide at least one image to accompany your article (max 10MB file size). Please include images as a separate file(s), not as part of a Word doc.

Send your contribution to:  
[editor@rowlandscastle.com](mailto:editor@rowlandscastle.com)



## VISIT OUR ACCLAIMED WORKING MODEL RAILWAY

Set in the centre of Rowlands castle, this scale model shows the troops, vehicles and trains as they were during the approach to D-Day in 1944.

**On display at Stansted House  
 Sun, Mon, Tues and Wed**

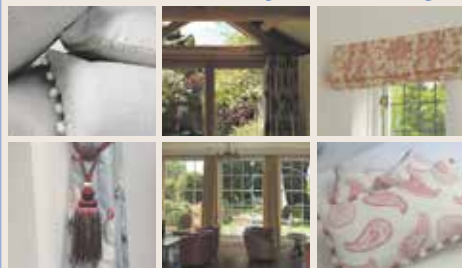
**1 - 4pm from Easter until the end of September**

Admission is free, admission to Stansted House is extra

[www.rowlandscastleheritagecentre.org.uk](http://www.rowlandscastleheritagecentre.org.uk)  
[www.facebook.com/rowlandscastleheritagecentre](https://www.facebook.com/rowlandscastleheritagecentre)



### Elizabeth Turner Soft Furnishings



A small, professional soft furnishings business, providing a bespoke service to meet our customers' exact requirements.

All of our products are hand-made to a very high standard. We also supply fabric, a range of curtain poles, tracks and other accessories.

Courtyard 4, Sindles Farm, Aldsworth, Emsworth PO10 8QS

**01243 389939**  
[info@elizabethturner.co.uk](mailto:info@elizabethturner.co.uk)  
[www.elizabethturner.co.uk](http://www.elizabethturner.co.uk)



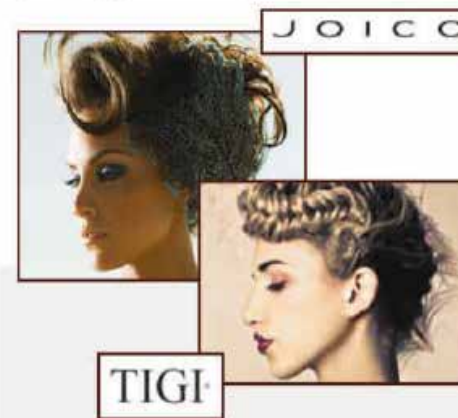
**02392 412 606**  
[info@stylestudio-rowlandscastle.co.uk](mailto:info@stylestudio-rowlandscastle.co.uk)

### Your local Hair and Beauty Salon

Recommended by The Good Salon Guide, we're situated in the heart of Rowlands Castle.

Offering a professional portfolio of hair and beauty treatments by a team of experienced hairdressers and beauticians.

- Hair for ladies and gents
- Beauty
- Special packages
- Late appointments available by request



**Contact us:** 3 Links Lane, Rowlands Castle, Hampshire, PO9 6AD

**Find us online:** [stylestudio-rowlandscastle.co.uk](http://stylestudio-rowlandscastle.co.uk)



## SIGNIFICANT GRANT FUNDING FOR THE IDSWORTH CHURCH FRIENDS TRUST

*Andrew Callender*  
*Chairman, The Idsworth Church Friends Trust*

In December 2018, The Idsworth Church Friends Trust received the very welcome news that it had been awarded a Developers Fund Grant by the East Hampshire District Council for £50,000.

Many of you will already be aware that because of the vulnerable state of the church building, an exterior screen has been erected over the East Window to protect it from adverse weather. This money has been allocated by EHDC for the urgent work to the East Wall and Window of St Hubert's Church and it is hoped that the work will be carried out over the

course of the summer. A further £4,000 for this project was awarded to the Idsworth Church Friends Trust by the Headley Trust.

With the focus on the building work for 2019, the Friends' programme of events has been reduced considerably in order to give the contractors every opportunity to complete the work.

Hopefully, many of you will have enjoyed our 'Flanders and Swann' fund-raising evening in the Parish Hall on the first Saturday in April.

## PROGRESS SO FAR...

*Pam Ewing and Terry Monahan*  
*Churchwardens*

It's nearly a year since Rev. Trevor Filtress retired, and the diocesan wheels are slowly moving towards the appointment of a replacement. The Parish Profile (description of who we are and our vision for the future of the parish) is in the final stages of preparation. The neighbouring Parishes of Blendworth, Chalton and Idsworth, and Catherington and Clanfield are also looking for new vicars, so the posts will be advertised together, indicating that there will be a flexibility in the appointments across the 6 parishes, (3 benefices). A date of July 16th has been fixed for interviewing applicants.

As we enter Lent, our thoughts focus on Easter. We have decided that, because we will have a visiting

minister, and because the weather can still be chilly in April, we will hold our main Easter Day service in Church, not on the Village Green as we have planned (and sometimes succeeded) to do for the past 12 years or more.

### **Some significant dates:**

**Sunday March 31st** – Mothering Sunday – Messy Church: 10am in the Centre, followed by a short service, coffee and cake.

**Sunday April 14th** – Palm Sunday – Morning Worship: 10am in Church

**Monday, Tuesday, Wednesday April 15th, 16th, 17th** – Holy week : 7pm - meditations in Church

**Thursday April 18th** – Maundy Thursday: 7pm Holy Communion remembering the Last Supper

**Friday April 19th** – Good Friday: 9am – Gather round the Cross on the Green for a short service, followed by a Walk of Witness along Redhill Rd  
10am – Meditation St John's Church

**Sunday April 21st** – Easter Sunday: 8am : Holy Communion  
10am: Family Communion

We hope to see you at some of these services.



## PARISH HALL THANK YOU

*Kath Molloy on behalf of RCPHMC*

Your Parish Hall relies on funding from a number of sources. The hire fees paid by our regular users in the community together with one off events such as parties, dances and the occasional wedding reception provides the bulk of our annual income. We are however reliant on additional sources of revenue to keep on top of the day to day running costs and essential maintenance.

Our thanks go to all those villagers who supported our annual Jumble Sale last October both donating items for sale and buying them on the day. We mustn't forget the members of the Rowlands Castle Women's Institute for their invaluable help delivering flyers, sorting and selling the jumble on the day and providing refreshments. Last year's sale raised over £700.

Further financial assistance in the last year or so has come from Malcolm Johnson and Marge Harvey

our District and County Councillors respectively, Rowlands Castle Parish Council and the RCA. These welcome contributions have been put towards refurbishment of the shower and flooring in one of the changing rooms, new fencing, replacement windows and essential door and boiler repairs.

I would like to finish by repeating our plea in the last issue for subscribers to the Halls Lottery scheme based on the National Lottery bonus ball. For just £1 a week you can win £25 if your allocated number matches the Saturday bonus ball.

The Lottery has provided much needed financial help since 2004 so please contact:

Parish Hall Office 02392 413489  
rcphmc@btconnect.com  
Barbara Openshaw 02392 412400  
barbaraopenshaw36@gmail.com  
Mike Stafford 02392 471535 for further information or to set up a standing order

Dates for your Diary  
14th May AGM 19.00 Parish Hall. All welcome including new Committee Members.  
19 October Jumble Sale



1088132

St Johns CEC School Rowlands Castle  
For children aged 2 to 5 years  
Contact Manager Lorraine Bryant  
[jigsawplayschool@hotmail.co.uk](mailto:jigsawplayschool@hotmail.co.uk)  
[www.jigsawplayschool.co.uk](http://www.jigsawplayschool.co.uk)  
02392412164



## CONFESSIONS OF A VOLUNTEER

*Chris White MBE  
Resident*

I must thank my neighbour for getting me involved as a volunteer at Staunton Country Park.

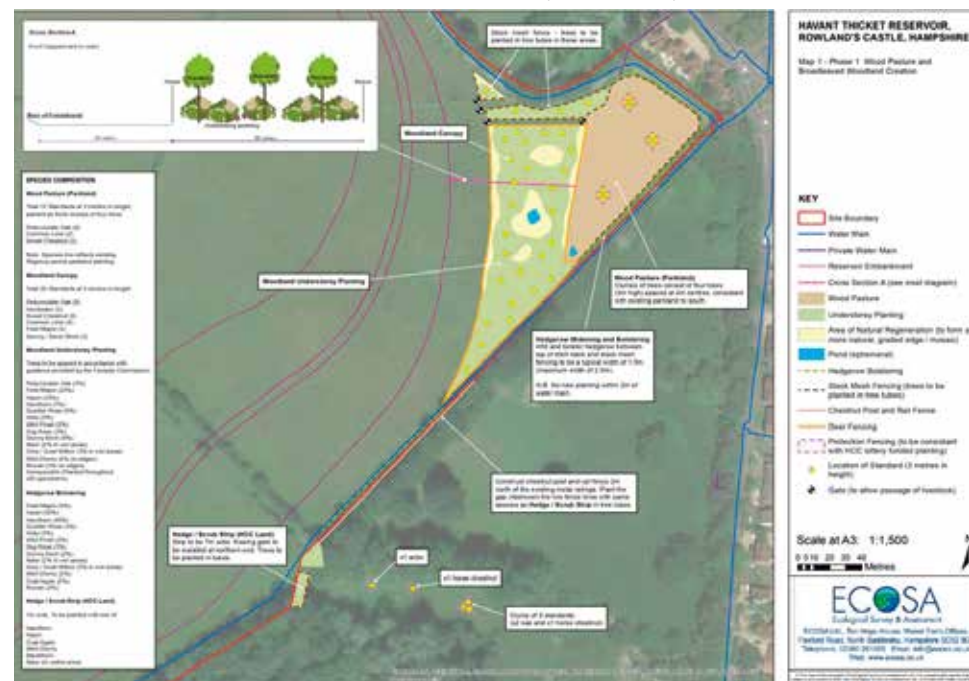
After moving to the area just over 18 months ago, and being retired I was looking for something to get me out of the house and meeting people, Katharine gave me a pamphlet with information of volunteering at Staunton.

My Thursday mornings are now spent out and about in this very large park. It's very physical but rewarding work, mostly vegetation removal, mainly Brambles (which my wife says are worth the pain, I'm not so sure) Rhododendron and Laurel. We usually have coffee (and this is the confessional bit) chocolate biscuits at about 10am.

As some people know there is a lot of work going on at Staunton Park and Havant thicket. Work has started on the car park ready for when the coach house is transformed into a cafe and museum plus, a room for the volunteers to have their coffee and biscuits. Work has also started with tree planting round the park with native varieties like Oak, Lime and Beech. At the time of writing there should be contractors working to remove the trees that are too much for the volunteers to attempt.

Portsmouth Water have started work on the reservoir, so over the next ten years that will continue apace, with many many trees and shrubs being planted to offset the loss of habitat and to make a corridor from havant thicket to Staunton Country Park for the wildlife to move safely between. The plans for the reservoir look really exciting too, with non motorised water sports, walks and bird hides, with a wetland,

I feel so lucky to have picked such a great time to be in this lovely corner of the world and be involved if only in a small way.





/ THE CENTRE SPREAD





## SOUTHERN MOWER SERVICES

New and used lawn mowers, strimmers, hedge trimmers, chain saws, ride on mowers, leaf blowers and more



Our highest priority is service to our customers

**Sales | Repairs | Service | Parts**

Unit 4 Hillside Industrial Estate, London Road, Horndean, Hampshire PO8 0BL

**Tel: 02392 592954**

**Email: [info@southernmowerservices.co.uk](mailto:info@southernmowerservices.co.uk)**

**[www.southernmowerservices.co.uk](http://www.southernmowerservices.co.uk)**



**Holistic healing**

**Helping you to help yourself**

**Stress, anxiety, trauma  
Recurring seasonal illness  
Chronic health conditions  
All inter-related affecting  
many aspects of your life.  
Can be fixable!**

**Susan Cowe Miller 07917 680967  
Rowlands Castle 02392 410090**

**EFT, Matrix Reimprinting, Meta Health,  
Counselling Skills, Reiki**

**[www.hampshire-eft.co.uk](http://www.hampshire-eft.co.uk)  
[susan@hampshire-eft.co.uk](mailto:susan@hampshire-eft.co.uk)**

## Village Vintage

Rodney Duggua

I see there are a few older cars in and around Rowlands Castle, so here is a short piece about my 1971 Austin 1300 Mark 3 that hopefully will be at the May Day Picnic on The Green.

The 1100/1300 range remained the UK's top selling cars between 1963 and 1971 with the one exception when, in 1967, the 1100 was the 2nd best seller when the Ford Cortina outsold it by approximately 25,000 vehicles.

1100/1300's seemed to be parked on every street and had an overall production run of over 2.1 million cars in six separately badged versions and trim levels :- Austin, Morris, Riley, Wolseley, MG and Vanden Plas, there was also a sporty 'GT' version. A number of variants were produced abroad.

Alec Issigonis who, created among others, the Morris 1000 and Mini, dealt with the engineering side of things and the main structural paneling of this Big Brother of the Mini. Pininfarina, the Italian car designers, were drafted in to style the body.

Front disc brakes were an innovative feature when the early models went on sale, the first version being the Morris 1100 in August 1962. The 1300 variants were

introduced in 1967. The suffix '1100/1300' denotes the size of the engine. Alex Moulton's revolutionary 'Hydrolastic' fluid suspension system provided a comfortable, sometimes 'interesting' ride.

These cars feature the now standard arrangement of a transverse engine driving the front wheels which gives first class road holding. Overall, the design retains clean lines with excellent internal space efficiency, matched with a near modern driving experience. This little car always receives a warm welcome at car shows and can sometimes gain more attention than the more swanky models as someone will want to talk about the range from times past, or sit in the car to relive memories.

The car was built on 26th October 1971 and Mr Fox was the first owner, he bought it new from Howard Meek's garage, Lea, Ross on Wye on 5th November 1971. Mr Fox paid £961.32, this included Purchase Tax, Delivery, Number Plates, Underseal, 12 months Road Tax and an allowance of £390 for the trade in of his 1966 Ford Corsair. At the time of writing this article the car has covered just 42,700 miles from new.

Please do come over and say hello on 6th May.



If you have something suitably vintage that you would like to see featured on this page, please let us know.

/ WOMANS INSTITUTE

theWI  
INSPIRING WOMEN

## CELEBRATION & INNOVATION

President: Jane Pickering

[rowlandscastlepres@hampshirewi.org.uk](mailto:rowlandscastlepres@hampshirewi.org.uk)

Secretary: Cathy Craggs

[rowlandscastlesec@hampshirewi.org.uk](mailto:rowlandscastlesec@hampshirewi.org.uk)

This winter has seen Rowlands Castle WI celebrate and innovate. We took part in the commemorations to mark the end of WWI by making a 'poppy net' which went on display at St John's Church to great acclaim. The net was hand crafted by some of our very talented members. In November we had a stall at the NSPCC Christmas Fair selling festive crafts and gifts. We continue to build on the success of last year with lots of new ideas including jute bags which, we hope, will encourage more people to ditch plastic bags for good. In January we held our popular annual coffee morning - this year it was in aid of The New Blendworth Centre. Members have enjoyed lunch at the Golf Club, a trip to the Mayflower Theatre to watch Calendar Girls and a very interesting talk about Westminster Abbey.

Coming up we have a trip to Whitchurch Silk Mill and the Bombay Sapphire Gin Distillery. We are holding our second Spring Fair on 11 May in the Parish Hall - it promises to be an event with something for everyone so do come along. We will, again, be at the Nostalgia Show from the 28-30 June at Stansted Park and will have a stall selling crafts and gifts at the Village Fair on 6 July.

The 2019/20 Programme will be on our noticeboard (outside the estate agents) shortly - do have a look and if you would like to know more, come along to a meeting and enjoy a cup of tea/coffee or a glass of wine with us. We meet on the second Monday of each month (except August) at 7.30pm in the Parish Hall, Links Lane. Drop us an email if you've got any questions and/or to let us know you're coming along!





## / THE VILLAGE AND SURROUNDINGS IN PICTURES

*An April view towards St Huberts*



## / STAUNTON PARK

### CELEBRATING NATIONAL TEA DAY

The true origins of Earl Grey tea remained a mystery until recent research in The East India Company archives revealed that the use of orange flavouring with tea was first observed in China in 1793 by Sir George Staunton, a company botanist. He witnessed the Chinese scenting their teas with bitter orange blossoms called Neroli.

Bergamot, commonly used in most Earl Grey tea today, is a subspecies of Citrus Aurentium, or 'Neroli', the original flower used in China. Sir Joseph Banks, to whom Staunton reported his findings, experimented with various flavourings and thus the recipe was devised long before Earl Grey heard of it from Sir Banks, his friend.

Tea tasting masterclass at  
Staunton Country Park

Sunday 28th April 2019

11.00am to 12.30pm or  
2.00pm to 3.30pm

We are celebrating National Tea Day and Staunton's connection with China and are offering a wonderful opportunity to experience a tea tasting masterclass provided by a Tea Master from the East India Company.

The sessions will last 1 ½ hours (select 1100 or 1400) You will be tasting different teas to include: White tea, Green tea, Oolong tea, Earl Grey tea and Black tea. All teas are the finest selection provided by the East India Company.

Held at Staunton Farm (The Garrett Room) Middle Park Way, Havant PO9 5HB telephone: 02392453405  
£30 per person: <https://www.hants.gov.uk/shop/product.php?productid=52548>





## COMPUTER PROJECT DESIGN A NEW RAILWAY STATION FOR ROWLANDS CASTLE

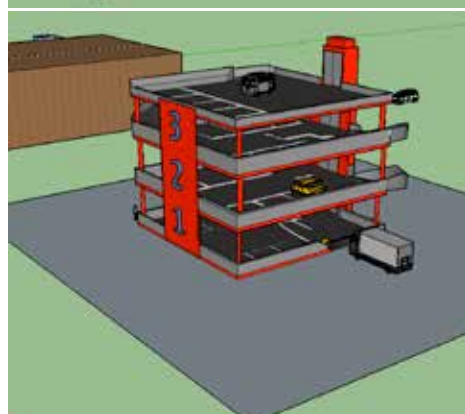
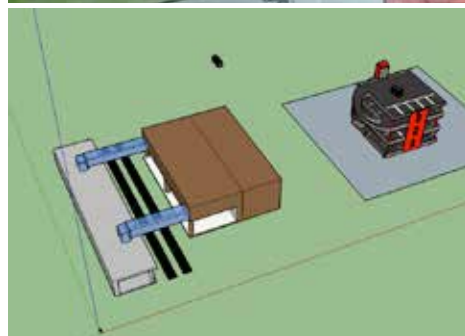
*Peter Hopson Year 6 Teacher*

On Wednesday 19th December 2018, the children in Year 5 and Year 6 at Rowlands Castle, St. John's CEC Primary School presented their project work for a new railway station in Rowlands Castle to representatives from the Parish Council and School Governors.

The project had 3 key aspects.

1. To use SketchUp to design a 3D model of the station during their Computing lessons. The model had to clearly show the features of the station that would make it unique. As well as this, the model had to have originality and not have too much imported imagery.
2. To design a poster to advertise their new station. This poster had to encourage potential customers to come to their new station.
3. Finally, the children had to deliver a presentation to their peers and the judges, kindly provided by the Rowlands Castle Parish Council.

The children and adults had a wonderful afternoon. Everyone was particularly impressed by the quality of speech writing and delivery across both classes. The overall winning entry, by Molly and Chloe W, was chosen because of its focus on disabled access in the design and creativeness of the poster.



## RCGN

*Ian Hewitt  
Chairman*

We are one of about 120 groups in Hampshire, administered by a small team at the diocesan offices in Portsmouth. Last year's county AGM reported nearly 5,000 volunteers carried out over 17,000 tasks in the year.

We continue to serve the local community. Last year we carried out over 210 tasks for up to 60 clients mostly during 'office hours' but with occasional early runs for medical appointments

35 volunteers sounds a lot, but with up to 10 out of action recently, and others unavailable on particular days it is still quite a challenge to find drivers to meet all requests.

Many thanks to Caroline Marsh and Colin and Gillian Morgans, who have now stood down as volunteers. Colin and Gillian have been volunteer drivers for nearly 10 years and in that time have clocked up over 100 driving tasks between them. Thank you all three on behalf of many grateful clients.

We are always grateful to the Church-on-the-Green's hosting our coffee mornings so clients, volunteers and all involved can meet. Our next meeting is on 3rd April.

Diary Date: Our AGM will be in the parish hall on Thursday 9th May.. Our guest speaker will talk about the local surgery's Patient Representative Group.

We are always looking for new volunteers; if you could spare a few hours each month, please phone the GN helpline on 0845 519 6641 to let us know.

If you need any help – or know of anyone who may do e.g. with:

- Transport to hospital, library, shopping or a social event
- Collecting a prescription
- Any other neighbourly activity?

then please remind them of our help line - 0845 519 6641

Please give at least 48 hours notice but don't phone more than 2 weeks ahead.







## SPRINGFIELD CARE HOMES

### We believe that every day should be lived to the full...

We have two beautiful family run care homes that offer person centred Residential and Nursing care. Our compassionate, dedicated team are on hand 24 hours a day to support with all aspects of daily living. We support individuals seeking respite, convalescence and long term care.

*A warm welcome awaits you*

- Long term, convalescence and respite stays
- Dining areas looking onto beautiful gardens
- Landscaped patio and relaxation areas
- Ensuite single bedrooms
- Nutritious home cooked meals
- Large homely lounge areas
- Wi-fi available



72 – 74 Havant Road  
Emsworth  
Hampshire  
PO10 7LH  
Tel: 01243 372445



Printsted Lane  
Printsted  
West Sussex  
PO10 8HR  
Tel: 01243 372024

[www.springfieldnursing.co.uk](http://www.springfieldnursing.co.uk)



## Burchett Decorators

- Domestic, Commercial & Insurance Work
- 22 Years Experience
- All Types of Decorating including Wallpapering, Coving & Carpentry
- Fully Insured
- Clean, Tidy & Friendly Service

Ring for FREE Estimate  
or Just Helpful Advice

07866 691 984  
023 9241 3548

Email: [Burchett.davis@btinternet.com](mailto:Burchett.davis@btinternet.com)

Burchett Decorators, Finchdean, Nr. Rowlands Castle, Hampshire

Keith was friendly,  
reliable and worked  
exactly as he promised  
to, neat, tidy and very  
personable

Customer, Stedham, 2012



Portsmouth  
High School

GDST  
GIRLS' DAY SCHOOL TRUST

## Where Girls Do Better

Personal tours and  
Taster Days available  
throughout the year  
for Pre-School, Prep,  
Senior and Sixth Form

School minibus  
routes run to  
Rowlands Castle  
daily during  
term time

Find out more at [www.portsmouthhigh.co.uk](http://www.portsmouthhigh.co.uk)



## / LOCAL CHARITY

RC NSPCC  
THANK YOU

**NSPCC**

EVERY CHILDHOOD IS WORTH FIGHTING FOR

We would like to thank everyone who supported us at the annual NSPCC Christmas Fair. We raised over £1000 at this event.

### Committee Members Needed

The Rowlands Castle branch of the NSPCC has been running successfully for about 40 years and could not do so without an active committee. We have lost several members over the past year and desperately need new ones to be able to continue.

We are a fun and sociable committee. This may be a good way of meeting people particularly if you are new to the village and want to get involved. It is a good committee to join at any age and at any stage of your life! The only commitment really is to attend about 6 meetings a year to plan and run a minimum of two fund raising events.

If you are interested and would like more information, please contact Sue Arnold at [sueandjona@aol.com](mailto:sueandjona@aol.com) or on 07831447806.



**THE  
DOG RUNNER  
SOUTH DOWNS**

3, 5 and 7 mile runs for high energy dogs in Rowlands Castle, Emsworth and surrounding villages.

Call Helen Ison on 07791 125408  
[www.facebook.com/thedogrunnersouthdowns](http://www.facebook.com/thedogrunnersouthdowns)  
Email [helen.dargan@btinternet.com](mailto:helen.dargan@btinternet.com)

**Petersfield Framing Studios**

**Picture Framing by  
Andy Parks, MA, G.C.F.**

- ◆ Collection and Delivery Service in the Rowlands Castle area.
- ◆ Guild Commended Framer (G.C.F.) with 23 years experience.
- ◆ Over 400 different mouldings and 200 mount boards to choose from.
- ◆ Very competitive prices.
- ◆ Picture framing tuition also available.
- ◆ Tel: 01730 269926.
- ◆ Visit: [www.petersfieldframing.co.uk](http://www.petersfieldframing.co.uk)

**"We Collect and Deliver Your Picture Framing"**

**LK Family Law**

collaborative mediator specialist

Divorce, Mediation and Family Law Specialists  
Making separation manageable.

We are compassionate, professional and able to offer you a personal service to achieve the best possible outcome for you and your family.

Both Lisa and Kristy are trained mediators and collaborative lawyers so are able to offer non-court options. Your first consultation with us will always be at no charge – we believe that it is important that you have absolute confidence in our services before we work with you.

We are transparent about the costs you are likely to incur from the outset. There will be no hidden costs and we offer various payment plans.

Tel: 01243 373165 • Email: [info@lkfamilylaw.co.uk](mailto:info@lkfamilylaw.co.uk) • [www.lkfamilylaw.co.uk](http://www.lkfamilylaw.co.uk)  
Fiscal House, Emsworth, Hampshire PO10 7JE

**Nic Radcliffe**

**HEATING • PLUMBING • BATHROOMS**

I can help with all your boiler, heating, plumbing and bathroom needs. And I'm right here in the village, so can call round at short notice.

**Here's my number.  
Please keep it in a  
safe place.**

**07905 908143**

**[www.nicradcliffe.com](http://www.nicradcliffe.com)**  
[nic@nicradcliffe.com](mailto:nic@nicradcliffe.com)

GAS safe REGISTER City & Guilds Qualified OFTEC



## A COUPLE OF WAYS YOU MIGHT SAVE MONEY

*Nic Radcliff*

I read recently that the leading climate change specialists say we only have twelve years to act. I'm sure we all do our bit by turning lights off after leaving the room and not putting the heating on unless it's really cold. Some of us even go a bit further by cutting down on red meat and getting electric cars. There is something we can all do easily though and it might even save us some money.

It is to switch to an energy company that produces their electric energy from 100% renewable sources and whose gas sources are 'carbon neutral'; and that includes no nuclear as well. I know what you might be thinking – "surely that is a more expensive option?" Well, according to The Guardian, apparently not. On a British Gas standard variable tariff the average annual energy bill is £1200. Whereas from a company called Pure Planet that same average is £920. With them however, your account has to be managed by a smart phone app. So for those less technically minded there is Yorkshire Energy. Their average is £1000 annually. Still a saving of £200. Switching can be very easy. There are plenty of comparison websites and all you need are the details found on a recent utility bill.

My second item is about the boiler cover woes I've heard recently. One example I saw first hand with a customer was the engineer from the insurance provider saying that the boiler was beyond economic repair. They then gave a price for a new boiler, which was not covered under the policy. The customer rightly got a second opinion and I fixed the boiler for just under £150 and it's still going strong. So make sure to get that second opinion!

## ROWLANDS CASTLE LITTER PICKING

*June Halford*

*Rowlands Castle Association Committee*

On the weekend of 29-31 March, volunteers will be cleaning in ditches and under hedges seeking out any discarded litter and bottles. However if you miss the Annual Litter Pick at the end of March, don't worry, you can still help.

As this clean state doesn't last very long, the RCA have decided to have a monthly Litter Pick on the last Saturday of each month. The thinking is that you come when you can, the same people don't always have to turn up, it spreads the load and the village looks spick and span!

We meet at the Flagpole on the Green at 10am on the Saturday with our own picker sticks, yellow hi viz

vests and rubbish bags. Always a good idea to wear garden gloves as well! We then discuss which areas to cover, in ones or twos. The Green, Redhill Road and the Station approach are always the worst as they are the busiest.

Now we come to the good bit, when you've finished, you come back to the Green with your bulging rubbish bags and claim your free, well-earned bacon butty in The Fountain pub! We'd like to say a big thank you to Mary and Kerry for offering to feed the helpers!

We shall send out a reminder for these Litter Pick days via the Grapevine, during the week before. For further info contact me on [junehalford@gmail.com](mailto:junehalford@gmail.com)

## THE BIGGEST EVENT OF THE YEAR

Rowlands Castle Village Fair – Saturday the 6th July 2019

*Grahame Morrison*

*Rowlands Castle Village Fair Chairman*

The biggest event in the village calendar, the Fair requires a great deal of planning and effort by the volunteer committee members who organise it every year. Local businesses support us financially by advertising in our annual magazine (out in May and available free from Londis) that describes the day and contains useful information such as the entry forms for the Horticultural Show and the schedule for the arena events. I am very pleased to say that this year's event is sponsored by our local estate agent, Harris, Parkes and Drake. Without such support the considerable expenditure that the fair requires would not be possible. There are also a few pitches left for stalls on the green (booking form available at <https://rowlandscastlevillagefair.org.uk>) and there is a £5 discount for local charities.

I think it is important to emphasise that the fair has always been a non-profit event. The primary goal is to give the village and surrounding communities a great day out for grownups and kids alike at a traditional English fair with subsidised 50p rides, a Punch & Judy show, coconut shy, face painting and colourful stalls and more. For adults we provide an all day bar and evening entertainments in the marquee (that this year is provided by a The Los Palmas 6, a fantastic Madness tribute band) and all money raised by the bar, food and evening tickets sales goes towards next year's event and any "profit" for local benefits such as the exercise equipment on the recreation ground and the defibrillators around the village that were paid for by the committee.

So see you all in July for a great day and a fun evening!



## TIPS FOR PAIN FREE GARDENING...

Natalie March

Tips and exercises from Award Winning Physio Natalie March from Physio-logical, a chartered physiotherapist based in Rowlands Castle and Havant

At last the weather has started to warm up and there is a glimmer of sunshine around! Many of us will be thinking about our gardens and starting to prepare pots and beds ready for the spring. We forget just how strenuous a spot of gardening can be on our bodies, so we thought we'd share some of our top tips and exercises to keep you strong and healthy and enjoying your gardens!

It is important to do a few stretches before and after gardening. No-one would consider running a marathon or going to the gym without doing a warm-up. You are going to do some moderate exercise so it is important to prepare your body.

### Top Gardening Tips

**PLAN YOUR WORKLOAD** – it is important to have a few tasks on the go at the same time, but work a little on each every time you go into the garden, your body will much prefer the variety of tasks.

**PACE YOURSELF** – do not try and dig the whole vegetable patch in one morning, your back and muscles will find it very strenuous.

**PRUNING** – do this in moderation it puts a lot of strain on your forearm muscles which can lead to tennis elbow, try and use two hands for tough pruning, also stretching out your forearm muscles will help to reduce muscle soreness.

**CONSIDER YOUR EQUIPMENT** – use long handled tools if you have problems with your hips, knees or your back

**USE A KNEELER** – this will reduce the pressure through the knees

**DON'T OVERFILL THE WHEELBARROW** – it is better to make a few extra journeys with a lighter load

**MAINTAIN GOOD POSTURE** – squat down and bend at the knees, kneel whilst planting or weeding, don't just bend at your back.

**SET A TIMER** to tell you when to have a break, or you may lose track of time and just keep going.

Here are some strengthening exercises to do three times a week. You should work the muscles to fatigue (until they are aching).

Please be aware of your body and take advice from your GP before exercising or send an email to ([enquiries@physio-logical.net](mailto:enquiries@physio-logical.net)) for advice and guidance.

You'll get stronger by doing these exercises and hopefully those garden activities will be easier and more enjoyable. And don't forget to stretch too!

If you want to make sure you are gardening fit or are struggling with any niggles, aches or pains which are preventing you from enjoying your gardening then please get in contact with us via [enquiries@physio-logical.net](mailto:enquiries@physio-logical.net) or 07835 712306. We have physiotherapy clinics in Havant and Rowlands Castle, Hampshire.



### SQUATS

- In standing, with feet hip width apart
- Slowly bend at your hips until your knees are at about 90 degrees
- Make sure your back is kept straight and your knees are in line with your second toe
- This should be slow and controlled, so down for a count of 3 seconds and up for 3 seconds
- Repeat until fatigue



### CALF RAISES

- Standing balance yourself on both feet
- Straighten your legs and raise your body so that you're supported by the balls of your feet, with feet hip-distance apart
- Go down and up keeping your weight evenly distributed through your legs
- You can use a chair for stability or do this exercise on the edge of a step to work harder
- Repeat until fatigue



### LUNGES

- Stand with your legs in a lunge position
- Go down and up keeping your weight evenly distributed through your legs
- Make sure you keep your knees in line with your second toes and your back up straight
- Hold for 10 seconds then repeat. This should be slow and controlled, so down for a count of 3 seconds and up for 3 seconds
- Repeat until fatigue



### WALL PUSH-UPS

- Face a wall, standing a little farther than arm's length away, feet shoulder-width apart
- Lean your body forward and put your palms flat against the wall at shoulder height and shoulder-width apart
- Bend your elbows and lower your upper body towards the wall slowly and controlled
- Keep your feet flat on the floor
- Then slowly push yourself back until your arms are straight
- Repeat until fatigue

### Newsletters:

If you would like to subscribe to our monthly newsletter where we share self help tips and exercises then please email us at [enquiries@physio-logical.net](mailto:enquiries@physio-logical.net)  
*Happy gardening!*



# 1st Rowlands Castle Scout Group

The Group comprising of Beaver, Cub, Scout, and Explorer Sections. Leaders and Helpers



**6-8 years**  
Make friends and try new indoor and outdoor activities Monday  
5.45pm - 6.45pm



**8-10½ years**  
Learn practical skills while having adventures with friends Monday 7.00pm - 8.30pm



**10½-14 years**  
Build confidence, resilience and a sense of adventure Friday 7.00pm - 9.00pm.



**14-18 years**  
Take the lead, work together, and embrace new experiences  
meeting at Tuesday 7.00pm-8:30pm



**1st RCSG Leaders**  
**18 plus years**  
Support group and run the sections

Join our group and be part of something great



For more info phone 02392413359  
visit [www.1strowlandscastle.co.uk](http://www.1strowlandscastle.co.uk)  
or email [gslrita@1strcsg.co.uk](mailto:gslrita@1strcsg.co.uk)



/ ST JOHN'S PRIMARY SCHOOL



## UPDATES FROM THE ST JOHN'S PRIMARY SCHOOL PTA

*Jim Cochrain*

### SCHOOL SUMMER FAIR 2019

St John's Primary School PTA would like to invite you to their summer fair on Saturday 15th June 2019 from 12 to 3pm.

The summer fair is our biggest event of the year and everyone is invited! We're still very busy putting everything together but you can expect the usual range of activities and stalls to keep you busy.

Over the past few years the monies raised from the fair have helped purchase PA equipment, a new stage, sports equipment and much more.

The fair is a day of great fun for the whole village so we hope to see you there!

(we always need people to help, particularly with the setting up and packing down - if you are available please contact [chair@stjohnspta.com](mailto:chair@stjohnspta.com))

*Photos courtesy of Anthony D'Souza*

### POSH PIE & QUIZ NIGHT

We would like to thank everyone who attended our quiz night.

The church hall was packed out with eager quizzers ready to tackle the wide range of rounds including multiple choice, video observation and local knowledge. Everyone who attended now knows how many lamp posts there are on the village green and what Take That sounds like played backwards. We also learnt that pretty much everyone was happy to gamble all their points to guess an answer - this didn't go too well for most teams!

The food was supplied by the award winning Picaramba team which helped make the evening a great success and we were pleased to raise over £350 for the PTA fund.

Thanks again to everyone, especially those who were able to stay behind to help clear up, and we look forward to seeing you all at the next one...



## THE STRONG FORCE

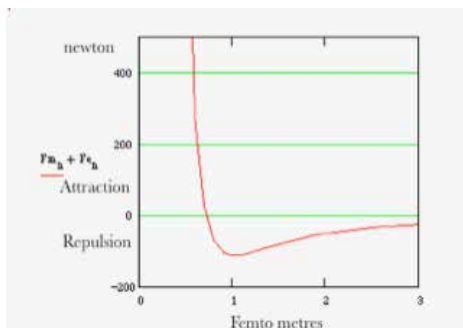
Frank Philpot

The strong force opposes the fusion of hydrogen into helium which might provide release of limitless power.

Electric charge, can be positive or negative. Charges with the same polarity repel each other while unlike charges attract.

Atoms have positively charged protons tightly packed inside the nucleus, which ought to repel each other with immense force and yet they are stable. The accepted reason for this stability is that a so called 'strong force' exists that holds the nucleus together in a mysterious way. Crucially the strong force pops into existence, only at very short range, does its fantastic job of holding the protons and then vanishes at slightly greater distance.

My solution to the mystery of the source of the strong force is that, as protons are also little magnets they stick together with a magnetic field which has an inverse fourth power law, which I calculate overcomes the inverse square law of the repulsive electric field. So I think the strong force is due to the magnetic field of protons.



# DO YOU HAVE A STORY TO TELL?

Book design  
Brochure design  
Graphic design  
Website design  
Ad design  
Campaign design

Professional design for  
your memoirs, your  
corporate image or your  
brand story telling.



Contact your local design partner  
kelvin@t-eight.co.uk

www.t-eight.co.uk

## MacDonald Oates LLP SOLICITORS



Leading Client Service

Residential Property  
Family Law  
Mediation Services  
Wills, Probate & Trusts  
Litigation & Dispute Resolution  
Employment Law  
Company & Commercial  
Commercial Property

Petersfield Office

Tel: 01730 268211 | Fax: 01730 261232

Midhurst Office

Tel: 01730 816711 | Fax: 01730 816016

[www.macdonaldoates.co.uk](http://www.macdonaldoates.co.uk)

## PILATES, FITNESS YOGA AND BARRECONCEPT

**POSTURE PILATES** - to re-balance the body by improving posture, muscle tone, flexibility and core stability.

**FITNESS YOGA** - stretch, strength with Yoga postures.

**BARRECONCEPT** - all body workout, stretches and tones muscle whilst burns fat.



**Day/Evening Classes available small friendly classes held in a private local studio.**

Please Contact: Stacey Merritt BSc  
[merrittstacey@hotmail.com](mailto:merrittstacey@hotmail.com) / 07957 215459

Register  
of  
Exercise  
Professionals





## THE NEXT CHAPTER

Jace - Student Pastor

In late Summer of 2018, which seems a long time ago now, our Chapel renovations began. After many planning meetings and hard work, the project commenced and was completed on time. Now in the Spring of 2019, the Chapel is in use frequently.

On the 11th May (although this is subject to change, so do keep an eye out via The Grapevine and our outside posters) we are intending to have an 'Open Saturday', where anyone from our community will be most welcome to drop in, share a warm drink and biscuit and view the completed building. Also in May, we will be holding an 'Open Evening', again, please keep a watchful eye on the local adverts.

On Friday 29th March, 7.30pm we will be having our annual 'Music Evening' and for the first time, in our Chapel! This is a free event but any kind donations during the interval will go to Enable Ability, a charity supporting disabled children and teenagers. Once again, we have a wealth of talented musicians, singers and poets, so please do come along and join in the fun!

Apart from our 10.15am Sunday morning service and 7.30pm Tuesday evening Prayer meeting, we continue to hold our Tuesday and Wednesday Coffee Mornings, all most welcome, the Thursday morning exercise classes and on Friday mornings, 10am, except for the last Friday in the month and school holidays, we have our mums, dads, carers and toddlers group called Music Makers. We now have spaces, so please do contact us via our webpage, phone or just pop in and enjoy the music, dance, finger food and free play. £2.50 is the charge per child plus 50p for each additional child.

As the Spring is here, may we at Church on the Green wish you a lovely Easter.

Take care and God bless.



**JOIN US FOR OUR ANNUAL CELEBRATION OF CREATIVE TALENT**

**BROWSE AROUND OUR SEVEN MAKER STUDIOS, MEET THE TENANTS  
AND ENJOY A VARIETY OF HIGH QUALITY CRAFT, EXHIBITIONS AND  
A POP-UP CRAFT MARKET ORGANISED BY SHOP CREATIVE.**

FREE ENTRY, FREE PARKING & REFRESHMENTS AVAILABLE.



**Making Space, 2 Bishopstoke Road, Leigh Park, Havant, Hants, PO9 5BN**

[makingspace.org/open-studios-2019](http://makingspace.org/open-studios-2019) ☎ 023 9247 2491 ✉ [admin@makingspace.org](mailto:admin@makingspace.org)

Facebook: @MakingSpace  
Twitter: @MakingSpace\_Org  
Instagram: @makingspace\_org

SUPPORTED BY Hampshire County Council  
Hampshire  
County Council

Havant  
BOROUGH COUNCIL

Registered Charity No: 1106387 | Registered Company Info: 04482676

SHOPcreative

## LIFE AT RCGC

Peter Klepacz the clubs PGA Professional

The Golf club over the winter months has been busy both on and off the golf course, especially at Christmas which we celebrate in a big way. The festivities commence early in December with the Ladies Christmas Fayre where visitors enjoyed a large and varied array of independent local stalls. Our annual family Christmas party is one of the most popular events of the year, with a Turkey Christmas dinner, plenty of entertainment and a visit from Father



Christmas for the children. Members were also treated to a Christmas carol concert from Denmead Brass Band, with the seasonal festivities finished off in style with a News Year Eve party to welcome in 2019.

On the golfing front the winter weather can have a profound effect on golf, but substantial investment in drainage means the course is fully playable even in the most inclement of conditions. October traditionally signifies the end of the clubs main competition season culminating in members competing for the Quaifers trophy, which is followed by a presentation evening where all the trophy's, cups and medals from the season are received by the winners. Throughout the winter months competitions although keenly contested take a more informal and varied format, with our

members enjoying playing in Turkey Trots, Fourball better balls, Texas scrambles and various knockout formats.

Those village residents who have walked across the path between Links Lane and Castle Road would no doubt have seen the new structure erected on our practice ground, which provides members with a comfortable environment to practice their games protected from the elements, and is proving to be a very popular addition.

The practice ground is where, as the clubs Professional, I spend a lot of my time giving lessons and holding regular clinics for beginners and improvers etc. You do not have to be a member to come to the club for lessons with all abilities welcome and lessons starting at £15 at off peak times. Throughout the summer I will be holding a number of free adult taster sessions.

The club are very proud of our active junior section and along with many internal junior competitions, we enter teams in a number of local leagues and host friendly matches, with the emphasis very much on participation and enjoyment. Golf is a great game for children to learn and if you know any children who would like to give it a try why not bring them along to our free junior taster session

on the 10th of April at 10.00am. Alternatively we offer junior coaching on a Sunday morning starting at 10.00am with sessions costing only £3.

More information on getting into golf and the taster sessions can be found on the 'Professionals' section of the club website: [www.rowlandscastlelgc.co.uk](http://www.rowlandscastlelgc.co.uk).

If you have never been to the club and are interested in having a look around at what we offer or are thinking about getting into golf, then please pop in and say hello, we would love to meet you and show you around the club. Memberships are also currently available, both Playing and Social with more information on these being available from the club secretary Mr Keith Fisher.

*Illustration sourced from Vecteezy*

## GREAT DAYS OUT

### CHOCOLATE CRAFT WORKSHOP

Chocolate Craft Ltd, Unit 1, Upton Park Farm, Old Alresford, Hants, SO24 9EB

Select Saturdays between 23 March - 31 August  
Times vary per day.

In the Chocolate Craft Workshop lasting approximately 2 ½ hrs, you'll learn to make chocolates like the professionals. It's creative and fun and at the end of the session you have your very own chocolate creations to enjoy.

The workshops are suitable for anyone. Go on your own or with friends, all are welcome. Chocolate Craft's friendly & experienced staff will mentor and guide you through the session. No experience is necessary. Must be 16 years and over. Group sizes are small and won't normally exceed 14 people.

Prices: £59 per person or £99 for 2 people.

### BP PORTRAIT AWARD 2018

The Gallery, Winchester Discovery Centre, Jewry Street, Winchester, Hampshire, SO23 8SB

30 March - 26 June

The BP Portrait Award is the most prestigious portrait painting competition in the world. On tour from London's National Portrait Gallery, the award represents the very best in contemporary portrait painting.

The winning entry, by London-based artist Miriam Escofet, is *An Angel at my Table*, a portrait of the artist's mother drinking tea. The portrait was selected from 2,667 entries from 88 countries, submitted for judging anonymously by a panel which included journalist Rosie Millard and artist Glenn Brown.



### BRICKOSAURS

Marwell Zoo, Thompsons Lane, Winchester, Hampshire, SO21 1JH

5 April - 1 September

A world-first collection of giant LEGO® brick dinosaurs is coming to Marwell Zoo in 2019. The Zoo will become the first attraction in the world to host a collection of giant LEGO® brick dinosaurs and will feature a total of 50 life-sized sculptures.

A highlight includes the largest touring LEGO brick dinosaur model ever made - a whopping eight-metre T-Rex, plus be prepared for a few surprises!

BRICKOSAURS will be included with general admission and will be on display from 5 April until 1 September 2019.



This listing is provided as a community service. The editor, RCA committee and associates accept no responsibility for any changes, cancellations or inaccurate information. You are advised to always check an events status before attending.

### RAILWAY CHILDREN

Groundlings Theatre, 42 Kent Street, Portsmouth, Hampshire, PO1 3BS

20 April - 28 April

This exciting, heartfelt story by E. Nesbit is given a fresh adaptation for the stage, while remaining faithful in essence to the original. This exciting new production features a full-scale steam train on stage!

### IW MARDI GRAS

Ryde Town Centre, RYDE, Isle Of Wight, PO33 2HW

29 June

IW Mardi Gras is a carnival with a fantastic themed parade. It will feature 800 children and young people in fabulous carnival costumes performing some great choreography.

Our annual flagship event, a fantastic 'carnival in education' parade of colour, costume, dance, music, energy. Created by local schools and community groups on themes and topics celebrating the best of our environmental, heritage and cultural assets.



### SOUTHWICK D-DAY 75 REVIVAL

Southwick Village, Southwick, Fareham, Hampshire, PO17 6BE

5 June - 9 June

Southwick D-Day 75 Revival, 75th Anniversary takes place on Saturday 8th and Sunday 9th June 2019. For the sixth year running, the village of Southwick joins with Southwick Park to commemorate the anniversary of D-Day by offering an exciting and unique opportunity for visitors from all over the world to breathe in the atmosphere of those historic days at the nerve-centre of Operation Overlord.

This fantastic event includes exclusive D-Day map room visits, captivating D-Day history talks, WWII military vehicles and re-enactors with motorcade through Southwick village streets, Mother Attwell's 1940's tea rooms, 1940's school lessons, a family picnic area, cadet field gun challenge, free walking tours of Southwick village, home front with the Baker Street Boys, vintage street market, period funfair and food stalls.

### EASTER BUNNY TRAIL GILBERT WHITE'S HOUSE

Gilbert Whites House, Gilbert Whites House, High Street, Selborne, Hampshire, GU34 3JH

6 April - 22 April

Monday - Sunday 10:30 - 17:00

An Easter Bunny hunt with a difference at Gilbert Whites House! Bunnies are hiding throughout the grounds but you'll need to navigate to them using a compass (which will be provided). Suitable for all ages.





## GREAT DAYS OUT

Continued...



### INTERNATIONAL GARDEN PHOTOGRAPHER OF THE YEAR

Gosport Gallery, Ordnance Road, off the High Street, Gosport, Hampshire, PO12 1NQ

27 April - 26 July  
Monday - Sunday 10:00 - 16:00

International Garden Photographer of the Year (IGPOTY) is the world's most prestigious photographic competition and exhibition for garden, plant and botanical photography.

Coming to Gosport Gallery for the first time, the exhibition will feature a full display of the Competition 11 winners showcasing the finest images of plant life and the habitats of gardens and green spaces.

From the spectacular vision of plant life in The Cerrado, Brazil to idyllic British gardens and pastoral scenes, the exhibition will take visitors on an inspirational journey through sights both familiar and unknown.

IGPOTY is supported by The Royal Botanic Gardens, Kew where the exhibition of winners is first launched each year.

### ANNUAL TULIP FESTIVAL

Arundel Castle, Arundel, West Sussex, BN18 9AB

11 April - 5 May  
Monday - Sunday 10:00 - 16:00

Every year at Arundel Castle spring is welcomed in by the Annual Tulip Festival when tens of thousands of the flowers burst into bloom throughout the beautiful and extensive walled Gardens.

Last year's display was the largest to date, featuring more than 60,000 tulips and 120 named varieties. The 2019 festival is set to be even more spectacular, with colourful tulips galore expected from mid-April to early May.

### BLUES LEGENDS LARRY GARNER AND THE NORMAN BEAKER BAND AT THE SPRING

The Spring Arts & Heritage Centre, : 56 East Street, Havant, Hampshire PO9 1BS, Havant, Hampshire, PO9 1BS

18 April  
20:00 - 22:30

By popular demand, Blues Legends Larry Garner (Louisiana Blues Hall of Fame) and Norman Beaker (British Legend, Blues Hall of Fame®) with The Norman Beaker Band are returning to The Spring for a night of music to remember!

Born in Louisiana and picking up the area's Swamp Blues, Larry Garner's powerful voice and guitar skills as well as his gift for storytelling has seen him being inducted into the Louisiana Blues Hall of Fame, whilst Norman Beaker earned status as only one of ten British Legends in the Blues Hall of Fame®.

Previous appearances at The Spring sold out fast, so get your tickets now!



### PORTSMOUTH COMIC CON

Portsmouth Guildhall, Guildhall Square, Portsmouth, Hampshire, PO1 2AB

4 May - 5 May  
10:00 - 20:00 & 10:00 - 18:00

Following on from its huge success in 2018, Portsmouth Comic Con will return to the Guildhall in May 2019!

This annual event brings you the best of comic, film, TV and pop culture entertainment in what is set to be the largest event of its kind in the South!

Get behind the science of comics through a full range of panels, exhibitions, displays and workshops.

If you're serious about comics, love Marvel films or cult series like Dr Who or simply looking for a fun family day out this is the event for you!



### ROYAL WINDSOR HORSE SHOW

Windsor Castle, Windsor, Berkshire, SL4 1NJ

8 May - 12 May

Royal Windsor Horse Show is the UK's largest outdoor premier Show and takes place in the private grounds of Windsor Castle. The Show hosts 5\* International Show Jumping (which is the highest level possible) as well as 4\* International Dressage and 4\* International Carriage Driving. There are also national classes in Show jumping and Windsor is one of the UK's premier Showing events.

There are numerous exciting displays which take place at the Show including The Musical Ride of the Household Cavalry Mounted Regiment, The Musical Band of the Household Cavalry, The King's Troop Royal Horse Artillery, DAKS Pony Club Mounted Games and The Shetland Pony Grand National.

The site itself includes an extensive shopping village which hosts over 250 stands and there are many different places to sit and eat. It is the only time of year the public can access the private grounds of the Castle.

HM The Queen is the Show's Patron and often visits to watch her horses compete and does so on an informal basis.

There are five different arenas which are accessible by all ticket holders.

#### SPORTS INCLUDE

- Showjumping
- Dressage
- Driving
- Showing

#### DISPLAYS INCLUDE

- The Musical Drive of The King's Troop Royal Horse Artillery
- The Musical Ride of The Household Cavalry Mounted Regiment and The Mounted Band of the Household Cavalry
- DAKS Pony Club Mounted Games
- The Shetland Pony Grand National

Tickets can be bought from Royal Windsor Information Centre 01753 743589


# NOTES FROM EAST HAMPSHIRE COMMUNITY RAIL PARTNERSHIP

177 Facebook "likes"

**Volunteers continue to look after the station**

Volunteers from Rowlands Castle Parish Council continue to provide and maintain flower baskets (funded by the Partnership) around the station all year around. Thanks to their fantastic work, the station continues to look good throughout every season.

**ROWLANDS CASTLE PARISH COUNCIL**



**Future plans for Rowlands Castle Station**

Plans continue to provide a Rowlands Castle Heritage Centre at Rowlands Castle Station utilising the vacant Station House. The aim of creating a local museum, information point and community hub still stands, but difficulties in sorting out a lease and the fabric of the property means that timescales have lengthened somewhat. Nevertheless, we hope this exciting project will take shape in the coming year.

**Rowlands Castle Summer Fête**

As in previous years the East Hampshire Community Rail Partnership provided an information stall at this busy event, which took place in brilliant sunshine in early July 2018.

A wide variety of rail and tourism literature was distributed along with a number of our popular Station Wakes books. This is becoming a regular feature of the Partnership's annual diary of events and we look forward to seeing you there again in 2019.

If you would like us to attend one of your local fairs or events to promote travel and tourism in your area, just let us know and we will come along!



**EAST HAMPSHIRE**

**The South Downs Rambler Bus provides rail bus link**

In the Summer, East Hampshire Community Rail Partnership and Three Rivers Community Rail Partnership helped to arrange a new rail-bus service linking Petersfield and Winchester Stations via an attractive rural route running close to the South Downs Way.

The bus aimed to encourage more visitors to the South Downs area by rail and bus from the Midlands, London and the South Coast, as well as closer by. It enabled rambles and walkers access to locations not normally served by public transport, or places which are, but certainly not on Sundays!

Operating on Sundays and Bank Holidays between 1 July and 2 September, the service was funded by CrossCountry Trains.

**crosscountry** **bluestar** **Three Rivers**



**excellent rail to bus connections!**

Bluestar provided the bus and regular driver Mike Rogers. Despite the seemingly endless scorching temperatures in July and August, passenger numbers increased steadily over the weeks, due in no small part to Mike's enthusiastic and friendly personality.

By the end of the season the bus had carried almost 200 passengers, which was excellent. We hope this figure can be easily surpassed this year, now that the service is becoming more established and more widely known.

This service is initially funded for 2019 and 2020 and will operate over the same July to September period.

Visit our Facebook page or website for details of the new timetables later in the year.



**SOUTH DOWNS RAMBLER**

**EAST HAMPSHIRE**

# INFORMATION RE REPORTING ISSUES THAT CONCERN YOU AS RESIDENTS

The Parish Office deals with a wide variety of resident's queries and comments, some of which the Parish Council does not have the power/authority to act upon. Most recently, issues arising from the new housing developments have seen an unprecedented volume of contact with the Parish Office on matters such as parking, which is outside the Council's remit of action. This has placed a heavy burden on Parish Office staff whose Council-related workload has inevitably had to be 'side-lined' to respond to such queries. Information is provided on our website as to both the powers/duties of Rowlands Castle Parish Council (RCPC) and those matters for which either East Hampshire District Council (EHDC) or Hampshire County Council (HCC) is responsible. For ease of reference:

**RCPC** is responsible for The Green, including Deerleap Verge and some other small parcels of land around the King's Meadow Estate. As sole trustee of the respective Charities, it is also responsible for the Parish Hall and Recreation Ground, including its Pavilion. Finally it is responsible for all trees on its land, and also many of the benches and bins.

**Contact:**  
www.rowlandscastlepc.org.uk,  
Email: clerk@rowlandscastlepc.org.uk  
or Tel: 02392 413044

**EHDC** deals with planning development and control, parking enforcement, litter and waste collection, fly-tipping, street cleaning, street names, nuisance complaints, dogs and other animals, abandoned vehicles and some road markings.

**Contact:**  
www.easthants.gov.uk  
or Tel: 01730 266551.

Your local District Cllrs are: Malcolm Johnson for Rowlands Castle Village:  
Malcolm.johnson@easthants.gov.uk  
or Tel: 023 9241 2096 and Mobile: 07768 904551, and Nigel Wren for Finchdean  
and Idsworth: nigel.wren@easthants.gov.uk  
and Mobile: 07831 855 439

**HCC** deals with road matters (including speed limits, closures, signage and markings), pavements, rights of way, overgrown vegetation, flooding, drains and street lighting.

**Contact:**  
www.hants.gov.uk or Tel: 0300 555 1388 (for roads & transport) or 0300 555 1391 (for rights of way)

Your local County Cllr is Marge Harvey:  
marge.harvey@hants.gov.uk and Tel: 02392 413858 and Mobile: 07840 694133

Contacting the appropriate organisation/person will mean your query is dealt with by the responsible party. We suggest copying your local District or County Cllr in to your correspondence with the organisation to keep them 'in the loop' on things concerning residents in their Ward or Division.

You are welcome to copy Rowlands Castle Parish Council in as well on clerk@rowlandscastlepc.org.uk .





## S.Roberts Upholsterers

Professional upholstery.  
Contract and domestic - any size work undertaken

We provide a free measuring and quotation service and you can find us on Checkatrade.com

**Checkatrade.com**

Call on 01243 377200  
for all your upholstery requirements

[www.re-upholster.co.uk](http://www.re-upholster.co.uk)



Unit 10, Palmers Road Industrial Estate, Emsworth, Hants PO10 7DH

## MORRIS BUILDING SERVICES

Shaun Morris  
113 Finchdean Road, Rowlands Castle, Hants, PO9 6EN

RENOVATIONS  
ALTERATIONS  
SMALL WORKS

ALL ASPECTS OF PROPERTY MAINTENANCE AND  
REPAIRS, INTERNAL AND EXTERNAL

ROWLANDS CASTLE FREE ESTIMATES  
(023) 9241 3130 07941 742598

**microsomma**



**IT Support for Home  
& Small Business**  
[www.microsomma.com](http://www.microsomma.com)

**David A. J. Somma BSc**  
Computer Systems Engineer

**Reliable & Local**

**Available 7 Days**

**Qualified & Experienced**

**0845 0170772**

**07796 346526**

[david@microsomma.com](mailto:david@microsomma.com)



## HELEN'S AIRPORT CARS

"With US it can often cost less than rail or airport parking"



Saloons  
MPVs  
Estates  
4 - 8 seaters

Reliable  
Affordable &  
Comfortable  
Pre-booked  
24hr

**01243 820820**



**Book Online Now [www.airporttaxi.co.uk](http://www.airporttaxi.co.uk)**

**We have a driver near you! 01243 780999**

## N • K • S Building & Landscapes

Drives • Patios

Stonework • Drainage

Garden Walls • Building Maintenance

Alterations and Renovations

Free Estimates

**Nigel Sykes**

023 9241 0118

07788 126 547

Please keep this leaflet in a safe place  
for when you need my services.

PROFESSIONAL PLUMBING  
& HEATING SPECIALISTS

**A. A. BARRETT**

51 Hatchmore Road  
Denmead  
Waterlooville  
PO7 6TE

Tel: 023 92258057  
Mobile: 07802321269

Tel: 023 92258057  
Mobile: 07802321269



BUILDING CONTRACTORS

COMMERCIAL, INDUSTRIAL and  
MAJOR DOMESTIC WORKS

Joinery Mill, The Green, Rowlands Castle,  
Hampshire. PO9 6BW

Tel 023 9241 2741  
www.winnicott.co.uk

*Established*  
**1904**

Fax 023 9241 2212  
mail@winnicott.co.uk



**homehardware**  
**Not just paint!**  
**WE COVER EVERYTHING!**

- ✓ GREAT SAVINGS ON MANY RANGES
- ✓ FRIENDLY EXPERIENCED STAFF
- ✓ **OPEN SUNDAYS**

**Dulux**  
PAINT MIXING CENTRES

**Austens**  
Petworth Tel: 01798 342104  
Billingshurst Tel: 01403 782963  
Midhurst Tel: 01730 815979

**Alton** Tel: 01420 85115  
**Emsworth** Tel: 01243 376852  
**Romsey** Tel: 01794 512141  
**Rowlands Castle** Tel: 02392 412332

[www.rowlandshomehardware.co.uk](http://www.rowlandshomehardware.co.uk)

**POST OFFICE** **OPEN 7 DAYS A WEEK**

# GEORGE IDE LLP

solicitors

Offices in Chichester, Guildford and London

Your leading law firm for:

- Wills & Probate
- Commercial Property & Business Services
- Family & Divorce
- Personal Injury & Clinical Negligence
- Residential Property
- Wealth Management



*Serving the community for over 50 years*

T: 01243 786 668 • E: [info@georgeide.co.uk](mailto:info@georgeide.co.uk)  
[www.georgeide.co.uk](http://www.georgeide.co.uk)



## THE LAST LAUGH



## ADVERTISE IN THIS MAGAZINE

The village magazine is funded entirely by advertising. If you would like to promote your business or services and advertise on these pages please contact Prue Amner on the address below:  
[ads@rowlandscastle.com](mailto:ads@rowlandscastle.com)

THANK YOU TO OUR SPONSORS FOR THEIR SUPPORT

THANK  
YOU!

## / NUMBERS TO KNOW

## WHAT WHERE HOW WHEN

EMERGENCY	999
NON EMERGENCY POLICE	101
NON EMERGENCY MEDICAL	111
ELECTRIC POWER CUT	105
GAS EMERGENCY	0800 111 999

### Rowlands Castle Pharmacy

12 The Green  
 Rowlands Castle  
 PO9 6BN  
 T 02392 413952

### Rowlands Castle Surgery

12 The Green  
 Rowlands Castle  
 Hampshire  
 PO9 6BN  
 T 02392412846

### Practice in the Park (Dentist)

4 Basing Road  
 Leigh Park  
 Havant  
 Hants  
 PO9 5AG  
 T 02392 486660

### Recycling Centres

Location: Behind Castle Inn, Rowlands Castle  
 Waste Accepted: Glass, Textiles  
 Location: Household Waste Recycling Centre,  
 Harts Farm Way, Havant, PO9 1HS  
 Waste Accepted: Go to [www.hants.gov.uk](http://www.hants.gov.uk) for  
 full details or call 0300 555 1389

fabulous flooring  
 with a perfect fit!



visit our website  
 to find out more  
[waterloovillecarpets.co.uk](http://waterloovillecarpets.co.uk)

Service is the secret of satisfied customers and satisfied customers are the secret of our 50 year success.

- Fabulous Carpets from Greendale, Brintons and Ulster
- Crucial Trading/Alternative Flooring Specialist
- Fabulous Vinyl Tiles from Amtico, Karndean and Vusta
- New Click only Vinyl Planks and Tiles from Karndean
- Fabulous Quickstep Laminate Flooring
- Oak Floors – Engineered Planks and Solid Click
- Fabulous Bamboo, Cork and Sustainable Flooring
- 12 MONTHS INTEREST FREE CREDIT on all products



We promise you a flooring that fits your requirements, fits your budget and fits beautifully into your home. Please call in, anytime.

A pleasure to come home to.....

31 The Square, Petersfield, Hampshire Telephone: 01730 262223/267381 Fax: 01730 267394  
 email: [sales@waterloovillecarpets.co.uk](mailto:sales@waterloovillecarpets.co.uk) [waterloovillecarpets.co.uk](http://waterloovillecarpets.co.uk)

ENVIRONMENTAL HEALTH IN  
AND AROUND THE VILLAGE

# DOG FOULING SCOOP IT, BAG IT, BIN IT

## THE LAW

A dog owner or walker must remove their dog's mess from land used by the public. If you don't do this, you may be given a fixed penalty fine of £50 by a dog warden or other council officer. You may also be prosecuted and fined up to £1,000. Responsible dog ownership means always taking a scoop or bags with you, and disposing of any mess in bins provided.

## REPORTING

Report dog fouling online or call  
Animal Welfare on 01730 234319.  
[www.easthants.gov.uk](http://www.easthants.gov.uk)

This notice is provided as a public service  
announcement.

Content sourced from East Hampshire  
District Council



## / NUMBERS TO KNOW

continued

### Havant Library

T 0300 555 1387 9.30 - 5pm, Monday to Saturday

### East Hants District Council

T 01730 266551, 9am to 5pm, Monday to Friday.

### Hampshire County Council,

T 0300 555 1375

Use [www.hants.gov.uk/aboutthecouncil/contact](http://www.hants.gov.uk/aboutthecouncil/contact)  
for a list of relevant numbers.

Open 8:30am to 5pm

### Rowlands Castle Parish Council

The Parish Office is open to the public between  
10am and on 12 Noon on Tuesdays and Thursdays,  
and at other times by appointment.

Rowlands Castle Parish Council,

11 The Green, Rowlands Castle, Hampshire  
PO9 6BW.

T 02392 413044

E [clerk@rowlandscastlepc.org.uk](mailto:clerk@rowlandscastlepc.org.uk)

W [www.rowlandscastlepc.org.uk](http://www.rowlandscastlepc.org.uk)



Created by Dooder - Freepik.com

# MARTIN STEELS LTD

INDEPENDENT OPTOMETRISTS & CONTACT LENS PRACTITIONERS

## ENHANCED EYE EXAMINATION & PROFESSIONAL OPTOMETRIC CARE

### Including

- Ultra-widefield Optomap and 3D-OCT scan.
- Specialist retinal and glaucoma tests.
- Advanced dry eye treatments.
- Contact lens fitting and aftercare (inc. medical contact lens).
- Designer eyewear.
- Designer sunglasses, available in prescription.

LINDBERG

optos

Maui Jim

adidas

FACE A FACE  
PARIS

PORSCHE DESIGN  
EYEWEAR

Silhouette  
AUTHENTIC EYEWEAR. SINCE 1964.

4 Old Flour Mill, Emsworth

01243 375 141

[www.martinsteels.com](http://www.martinsteels.com)

Monday – Friday: 9.00am to 5.30pm  
Saturday: 9.00am to 1.00pm





“Aqua were brilliant from start to finish.  
Friendly, professional and tidy!  
We would happily recommend them.”

- Mr & Mrs H (Waterlooville)

**AQUA**  
KITCHENS & BATHROOMS

“We wanted a wow factor whilst keeping the practicality of a busy kitchen - Aqua exceeded our expectations”

- Mrs R (Hayling Island)



## RENEW, RELAX, ENTERTAIN

Here at Aqua we deliver a great customer experience, bespoke design, attention to detail and installations that look fabulous. After more than 1,200 projects and over 400 great customer reviews we aren't the only ones to think this. We take enormous pride in the quality of our installations so you have complete satisfaction.

If you're looking to renew your kitchen or bathroom and need a trusted professional supplier, then talk to Aqua today.

**Call us on 023 9246 6007 to arrange your free survey.**

See our beautiful showroom at 18 Elm Grove Hayling Island.